

YOUR UK DISTRIBUTOR

 **Raytel Security
Systems Limited**

Southern Office Northern Office
Tel: 01245 428510 Tel: 0141 582 1275

email: sales@raytelsecurity.com
web: www.raytelsecurity.com



PIXEL UP

A technological core
Slim and strong



EDVAX DOOR ENTRY



Pixel Up. Slim and strong.

Pixel Up is the entrance panel with front cover plate made of 316 stainless steel with brushed finish, with thin thickness and distinguished by a linear design and by a reduced protrusion from the wall, of just 3 mm. It is available in the version with alphanumeric keyboard, with stainless steel keys and colour display with 5 mm thick polycarbonate protective glass, with IP54 degree of protection and IK08 impact resistance. For flush mounting, the entrance panel is supplied with a stainless steel box, to which the cover plate is fixed using special anti-tamper screws.

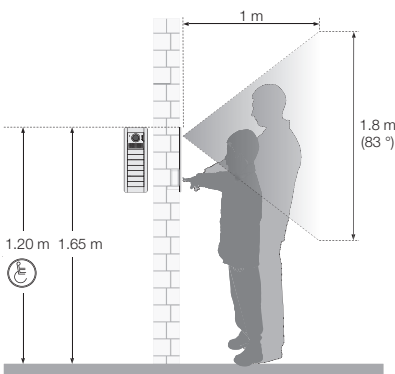
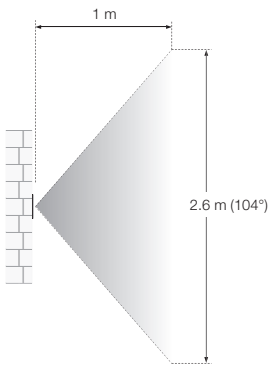


Video camera with wide-angle lens.

Video camera with high definition wide-angle lens. Recording range can be controlled directly from the indoor station using the pan&zoom function for the video camera.

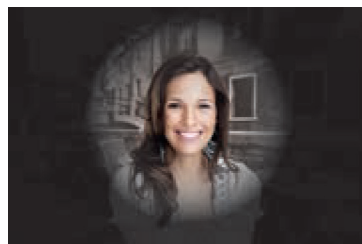


Camera recording area



Sensor: high sensitivity and HDR.

The high sensitivity of the sensor allows you to see even in areas with low brightness. The High Dynamic Range (HDR) technology in fact allows you to identify the caller even in poorly lit areas.



Pixel Up available for video door entry systems with Due Fili Plus and IP technology.



Automatic brightness control.

The intensity of the LEDs used for lighting the video camera is self-adjusting according to the environmental light, to ensure optimal visibility of the caller and the surrounding area.



Optical signalling.

The entrance panel operations are signalled by graphic icons on the display and by the LEDs on the front of the cover plate, which show the call under way, the line busy, the conversation and the lock opening.



Accessibility.

The display features high-contrast colours to facilitate name identification and improve reading. The device uses large-sized characters and symbols, so it can also be used by the visually impaired.



Backlit keyboard.

Backlit stainless steel keys with Braille codes featuring multitap function for rapid name search.



> Pixel Up.

The appeal of thickness, for slim generation.



High performance 3.5" display.

Wide viewing angle and backlighting that allow easy reading of information even in intense light. 5 mm thick polycarbonate screen protector.



Integrated teleloop.

Thanks to this technology, T-coil hearing aid wearer, can listen to conversations directly in their hearing aid.



Voice synthesis.

Entrance panel use by the visually impaired is facilitated, thanks to voice messages that guide the user step by step.



Echo canceller.

The echo cancellation algorithm means you can have natural, two-way conversations, automatically avoiding annoying audio feedback or whistling (Larsen effect), without having to adjust the microphone and speaker during installation.



Automatic gain control.

Thanks to automatic gain control (AGC), sound levels are optimised irrespective of the distance and tone of the speaker, of the devices called and of the complexity of the system. There is no need to adjust the gain.



Noise reduction and VAD.

You will hear loud and clear thanks to the noise reduction function and voice activity detection (VAD).

■ Due Fili Plus technology.

Due Fili Plus is a rapid, flexible and precise technology used to create high-performing video and audio door entry communication systems in all types of building, whether new constructions or restructuring works, in the simplest possible way. Due Fili Plus technology ensures perfect connections between all the devices through which power, audio, video and data pass.



Contacts list with up to 6,400 names.

Thanks to a user-friendly navigation menu, the entrance panel can manage up to 6,400 names. Calls can be made either by scrolling the contacts list or by entering the required number.



Composition.

3 mm thick steel front cover; dimensions 405x145 mm. The cover plate is fixed to the flush mounting box, dimensions 382x124x60 mm, using 4 special steel anti-tamper screws. The entrance panel can also be external surface mounted thanks to the dedicated box supplied with a rain-proof frame.



■ IP technology.

A system based on IP technology that overcomes the limits of conventional video door entry systems: performance is enhanced, audio/video communication between indoor and outdoor units becomes multiple and contemporary, the number of users potentially infinite. All this is made completely simple, also through the use of existing LAN networks, without laying any specific wiring.



> Performance.



Up to 6400 indoor units.

With Due Fili Plus technology, you can make installations which handle up to a maximum of 484 outdoor units and up to 6,400 indoor units. With the expansion interface, you can expand the system, replicating several Due Fili Plus systems with up to 32 blocks and 128 reception video-switchboards.



Up to 1200 metres.

With Due Fili Plus technology you can set up huge systems, with a distance between indoor and outdoor panels of up to 1200 metres, without losing any quality of the audio or video signal. The signal is carried along a single twisted-pair cable of small diameter.



Immediate programming.

Due Fili Plus technology ensures really simple programming. Directly from the indoor panel, the installer can programme the device with the outdoor panel. After encoding the indoor panel, the system can also simulate an audio/video call from the outdoor panel, to immediately check that the installation has been done correctly.



A comprehensive range.

An extensive selection of video entryphones, entryphones and outdoor units for residential and service industry facilities. All products vary in dimensions, design, structure, type of system, functions and mounting. They all share the same superior structural quality, attention to design, easy installation and use.



Accessible anywhere via smartphone and tablet.

Combined with the Tab 7S, the Video-Door app can receive the video call, view the video surveillance cameras or open the door, directly from your smartphone or tablet, wherever you are.

> Performance.



Scalability and great versatility.

The IP video door entry system was designed to respond in the simplest way to the needs of all kinds of buildings: from single homes to large residential complexes.



Simple and intuitive installation.

Self-configuring for the kit version or configurable via the Video Door IP Manager software on a PC for the simple and complex installations, all simplified by an autodiscovery function for Elvox IP video door entry devices. Installation is always quick and functional, supporting the needs of professionals.



Incomparable expansion.

With IP technology, the video door entry systems can be expanded to include a large number of users. Expansions are as easy as installations: quick and functional by using existing or shared dedicated LAN networks.



Total reliability.

The system data is replicated on the different devices, ensuring constant system operation. Everything is guaranteed to be controlled efficiently at all times, and in the event of a system failure service is restored in just a minute.



Accessible anywhere via smartphone and tablet.

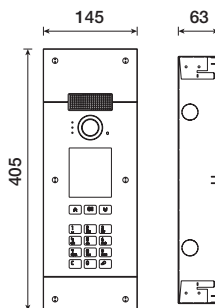
The Video-Door app can receive the video call, view the video surveillance cameras or open the door, directly from your smartphone or tablet, wherever you are.



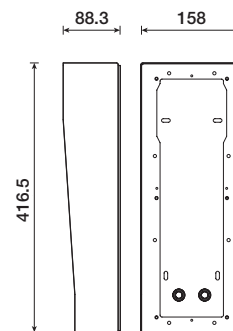
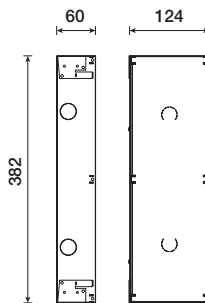
Full coverage.

Performance is enhanced, and the audio and video signal quality is guaranteed and protected, whatever the size of the building complex. For efficient, high-performance communication.

Due Fili Plus - Pixel Up entrance panel



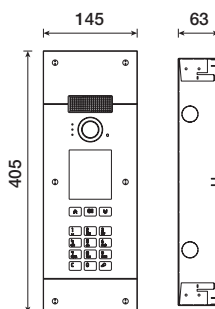
40405
Audio/Video entrance panel,
stainless steel, with electronic
unit and flush mounting box
40430 included



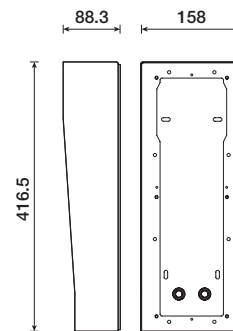
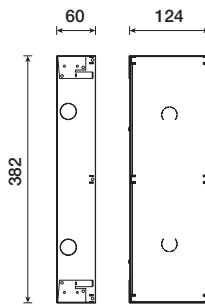
40430
Flush mounting box

40440
Surface mounting box

IP - Pixel Up entrance panel



40415
Audio/Video entrance panel,
stainless steel, with electronic
unit and flush mounting box
40430 included



40430
Flush mounting box

40440
Surface mounting box

BD19015 EN 1903



8 007352 615762



Viale Vicenza, 14
36063 Marostica VI - Italy
Tel. +39 0424 488 600
Fax +39 0424 488 709
www.vimar.com