

AR-321 Driver, Soyal Device Tools, 701 Server & 701 Client

Installation and Setup Manual



AR-321 DRIVER



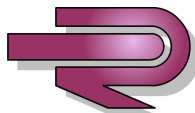
701 SERVER



**SOYAL DEVICE
TOOLS**

September 2012

Version 1.0



RAYTEL SECURITY SYSTEMS

Southern Office:
Raytel House
Brook Road
Rayleigh
Essex,
SS6 7XH
Tel: (01268) 749311
Fax: (01268) 749315

Northern Office:
20-23 Woodside Place,
Glasgow,
Strathclyde,
G3 7QF.
Tel: (0141) 5821275

CONTENTS

SOFTWARE OVERVIEW

AR-321CM Driver	3
Soyal Device Tools	3
701 Server	3
701 Client.....	3

INSTALLING SOFTWARE

AR-321CM Driver Installation	4
Soyal Device Tools Installation	7
701 Server Installation	11
701 Client Installation.....	15

701 SERVER - LAN SETUP

701 Server Setup for LAN Based Systems	19
--	----

701 SERVER - IP SETUP

701 Server Setup for IP Based Systems	27
---	----

UNINSTALLING SOFTWARE

Backing Up the Database	32
Uninstalling Soyal Device Tools.....	34
Uninstalling 701 Server	37
Uninstalling 701 Client	40
Deleting Program Folders	42
Deleting Registry Files	44

SOFTWARE OVERVIEW

AR-321 Driver

AR-321 Driver is the driver to be installed if using the AR-321CM USB to RS-485 converter. If this driver is not installed, there will be no communication between the host computer and the access control equipment on the system.

If using the AR-701CM with a USB to RS-232 converter, this driver will not work with the USB to RS-232 converter.

Soyal Device Tools

Soyal Device Tools is a software package that comprises of nine different programs:-

323DMaster - Used in mifare systems not offered by Raytel Security Systems.

AR401E - Used in AR-401E systems not offered by Raytel Security Systems.

CommView - This is a software development tool not for general use.

ISPTools - This is used for upgrading firmware on controllers/readers and resetting Master Codes on controllers.

Lift Control - Only available for the AR-725H, not offered by Raytel Security Systems.

MifareKey - Used in mifare systems not offered by Raytel Security Systems.

Node737 - This is used for setting up parameters on the AR-737HB-RAY reader.

SORTools - Used in mifare systems not offered by Raytel Security Systems.

UDP Updater - This is used for updating firmware in controllers with dual communication, such as the AR-725E, AR-829E-V5 and AR-881E.

EnrollTool - Used for saving fingerprints from AR-881 and AR-821EF-V5 controllers.

This program must be installed before 701 Server and 701 Client are installed.

701 Server

701 Server is the program used to set up and configure LAN and IP based access control systems, from the COM port used to the quantity and type of controllers connected.

It is also used for programming some of the more complex controllers such as the AR-716E and the AR-829E.

This program must be installed after Soyal Device Tools has been installed and before 701 Client is installed.

701 Client

701 Client is the user interface software for the access control system.

It is used for adding and deleting tokens, setting door groups for access, setting time zones for limiting access and monitoring ingress and egress on a live system, among other things.

This program must be installed after Soyal Device Tools and 701 Server have been installed.

Uninstalling Software

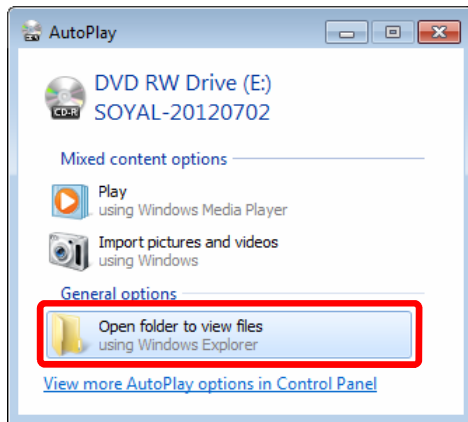
If the software needs to be uninstalled, it is important to follow the procedure on pages 29 to 43 of this manual. If the uninstallation process is not followed, the software will not be fully uninstalled and this could result in problems with future installations.

It is important to back up the existing database before any uninstallaing of software is performed, otherwise all user card information will be lost.

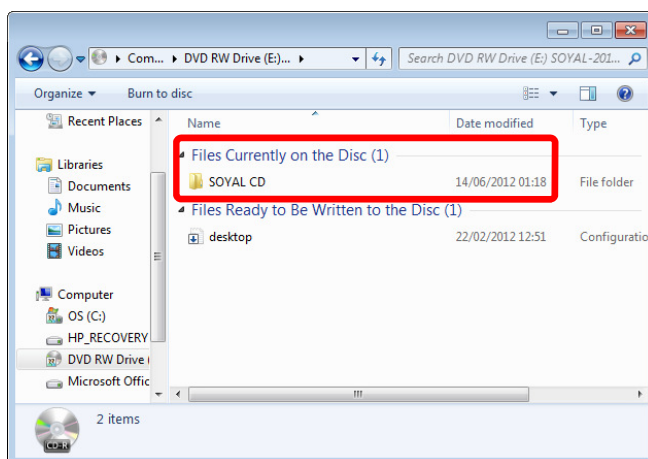
INSTALLING SOFTWARE

AR-321CM Driver Installation

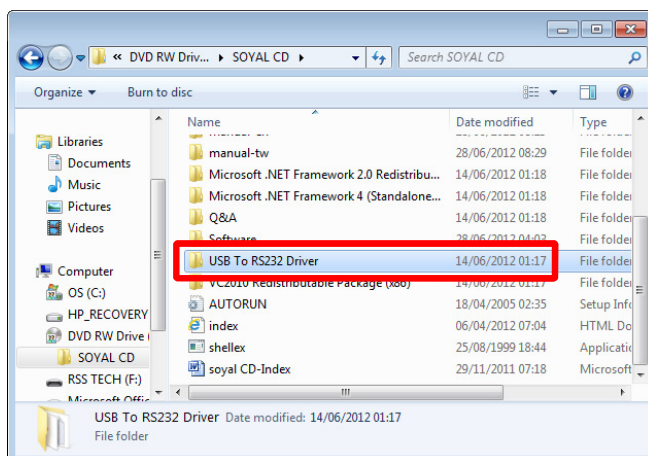
Insert the CD into your PC.
The following window will open:-



Left click “Open folder to view files”.
The following window will open:-



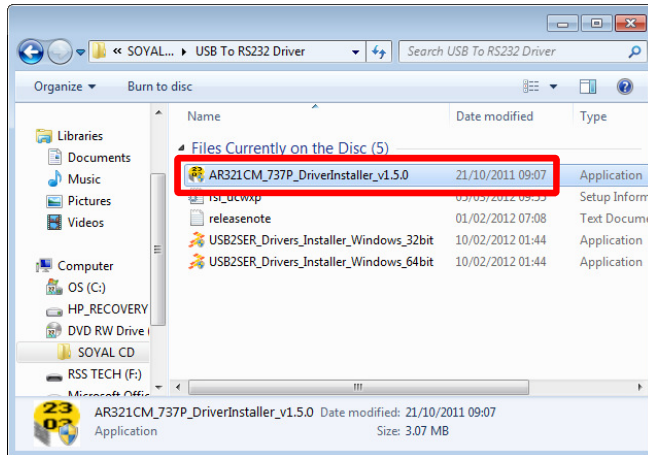
Double click “SOYAL CD”.
The following window will open:-



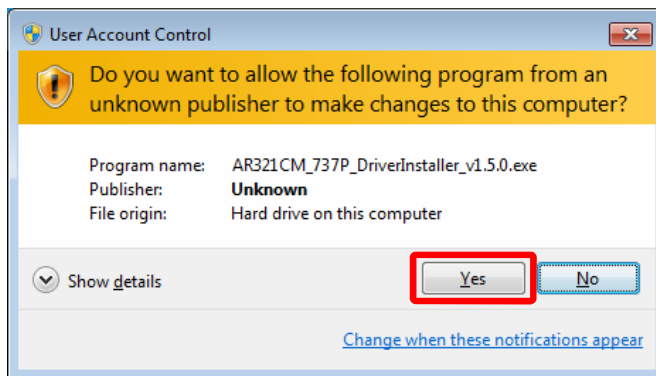
INSTALLING SOFTWARE

AR-321CM Driver Installation continued

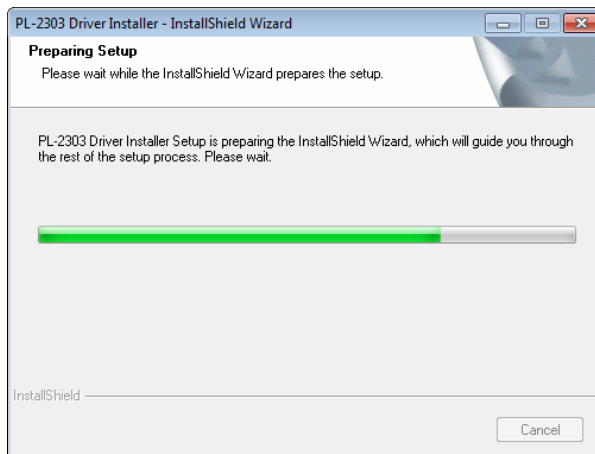
Double click on “USB To RS232 Driver” folder.
The following window will open:-



Double click “AR321CM_737P_DriverInstaller_v1.5.0”.
The following window will open:-



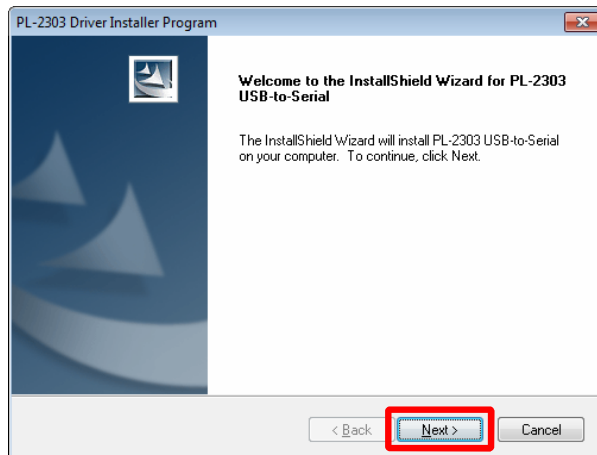
Left click “Yes”.
The following window will open



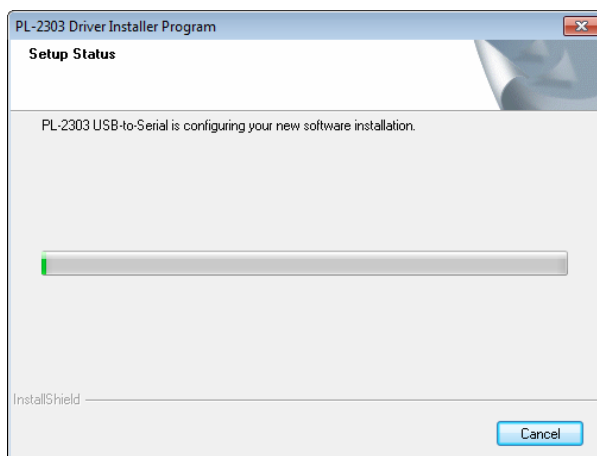
INSTALLING SOFTWARE

AR-321CM Driver Installation continued

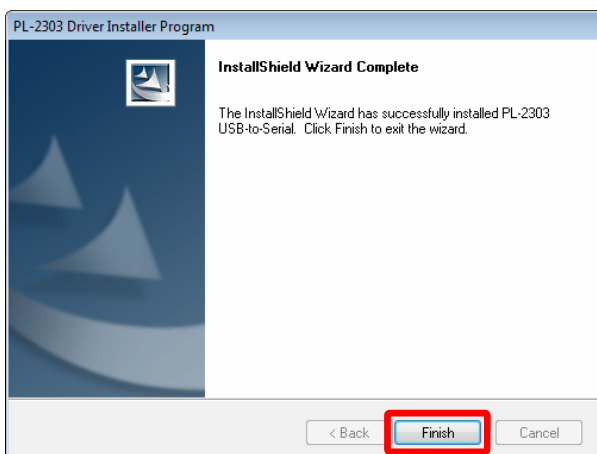
When PL-2303 Driver Installer Setup has finished, the green progress bar will stop and the following window will open:-



Left click “**Next >**”.
The following window will open:-



When PL-2303 USB-to-Serial has finished, the green progress bar will stop and the following window will open:-



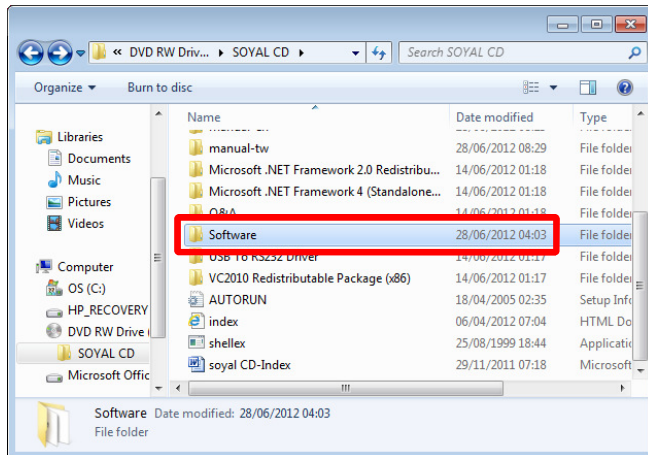
Left click “**Finish**”.
The driver is now installed.

INSTALLING SOFTWARE

Soyal Device Tools Installation

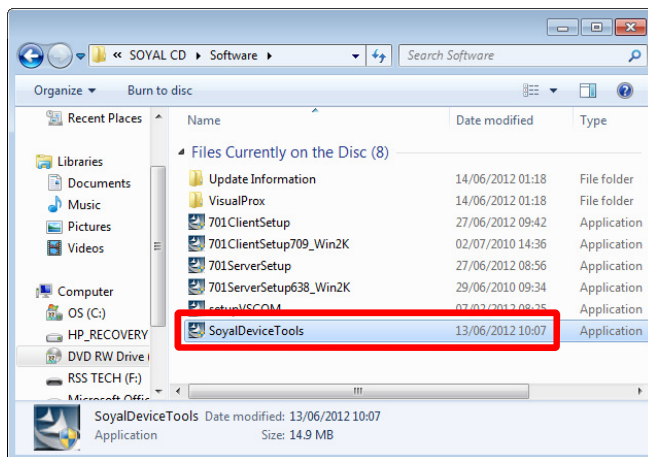
Left click the “Back” button.

The following window will open:-



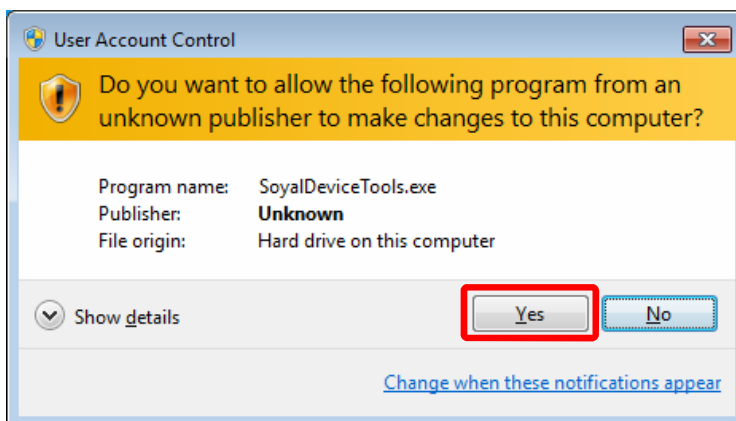
Double click “Software” folder.

The following window will open:-



Double click “SoyalDeviceTools”.

The following window will open:-

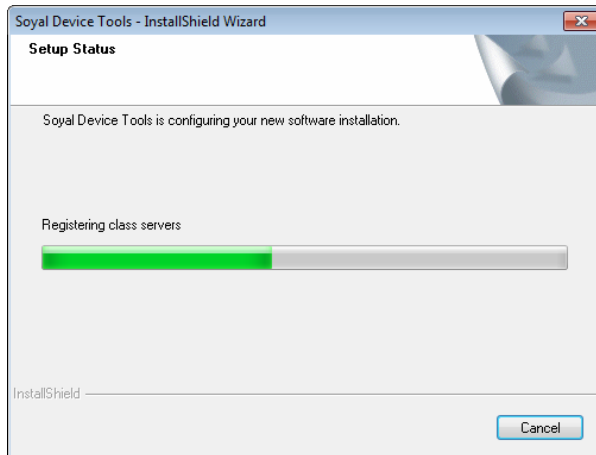


INSTALLING SOFTWARE

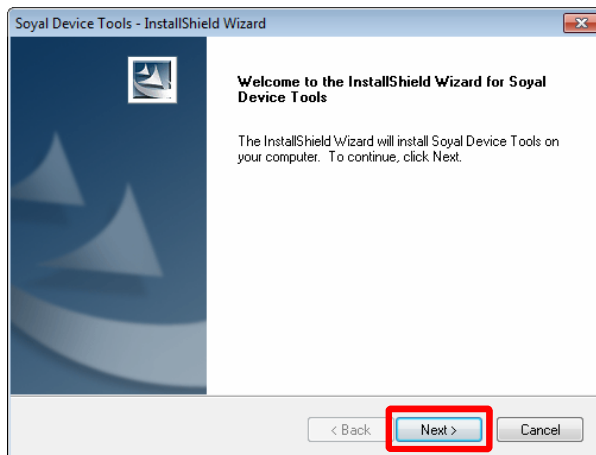
Soyal Device Tools Installation continued

Click “Yes”

The following window will open:-

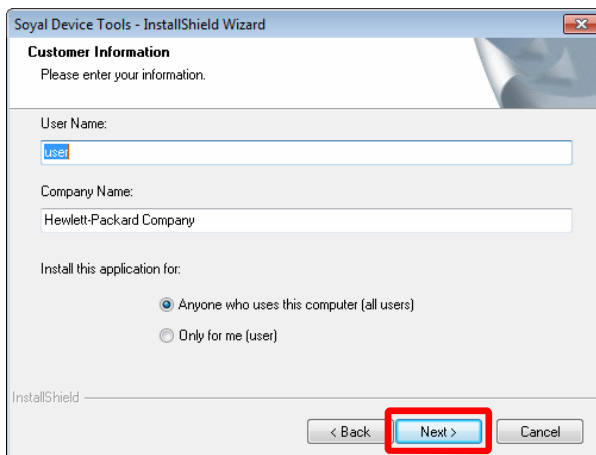


When Soyal Device Tools InstallShield Wizard has finished, the green progress bar will stop and the following window will open:-



Click “Next >”

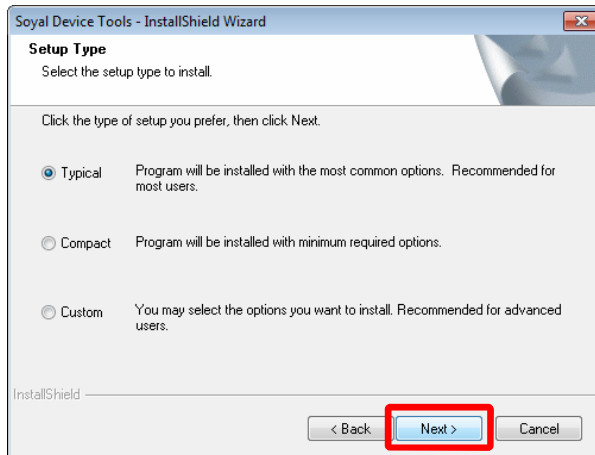
The following window will open:-



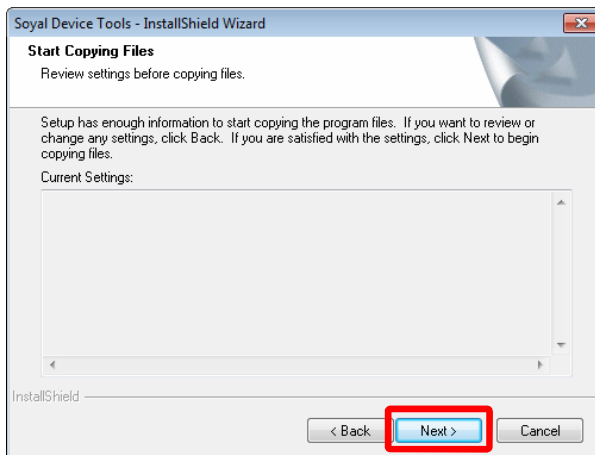
INSTALLING SOFTWARE

Soyal Device Tools Installation continued

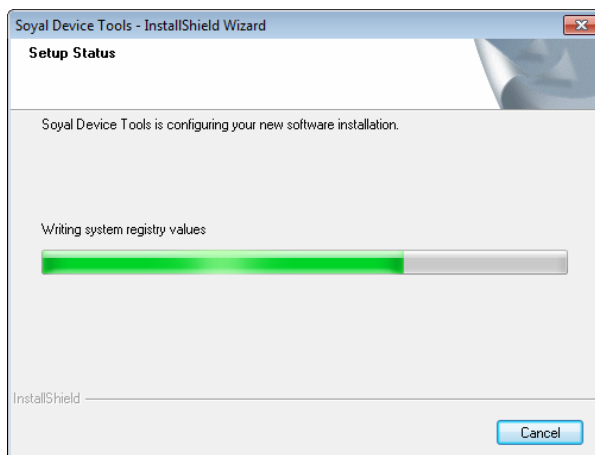
Enter a User Name and Company Name and then click “Next >”.
The following window will open:-



Click “Next >”
The following window will open:-



Click “Next >”
The following window will open:-

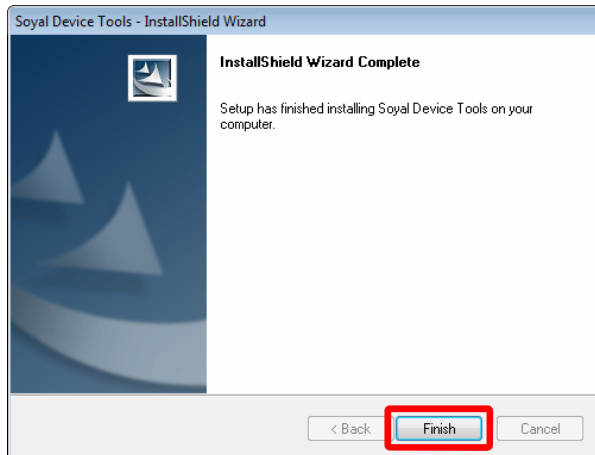


INSTALLING SOFTWARE

Soyal Device Tools Installation continued

Click “Next >”

The following window will open:-



Click “Finish”.

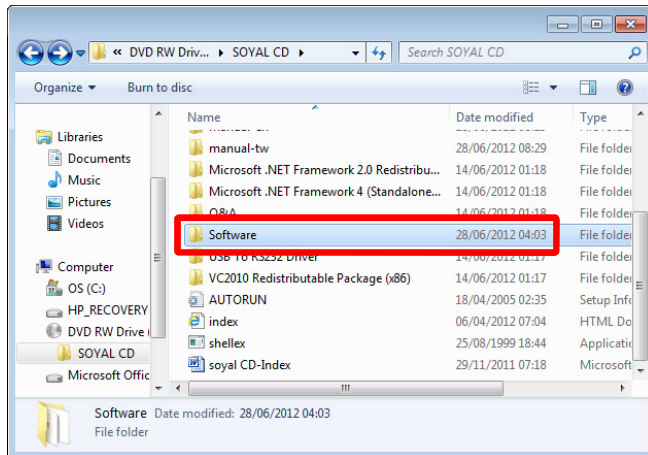
Soyal Device Tools is now installed.

INSTALLING SOFTWARE

701 Server Installation

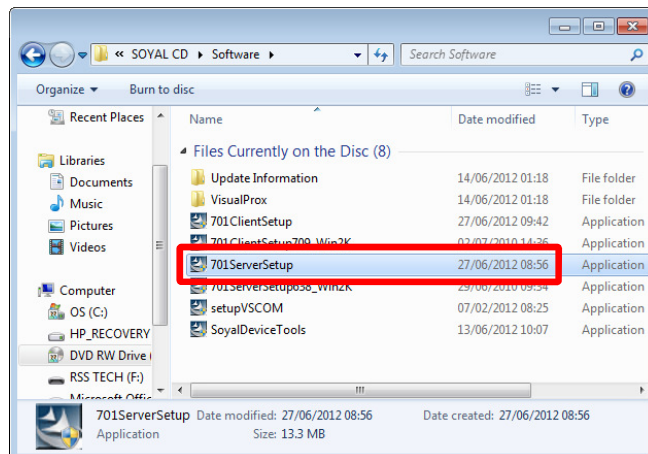
Click the “Back” button.

The following window will open:-



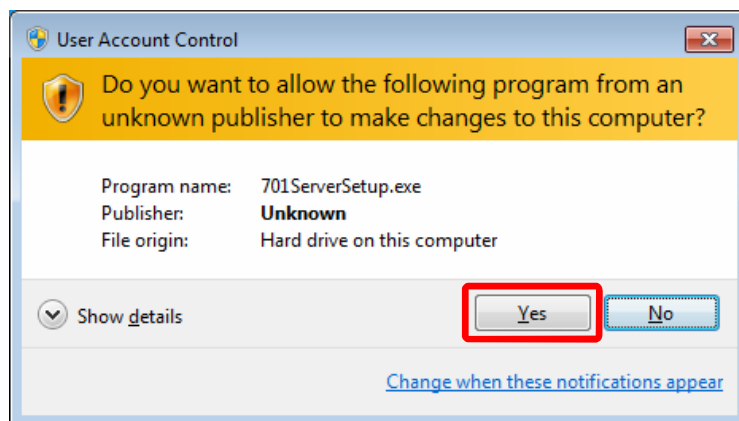
Double click “Software” folder.

The following window will open:-



Double click “701ServerSetup”.

The following window will open:-

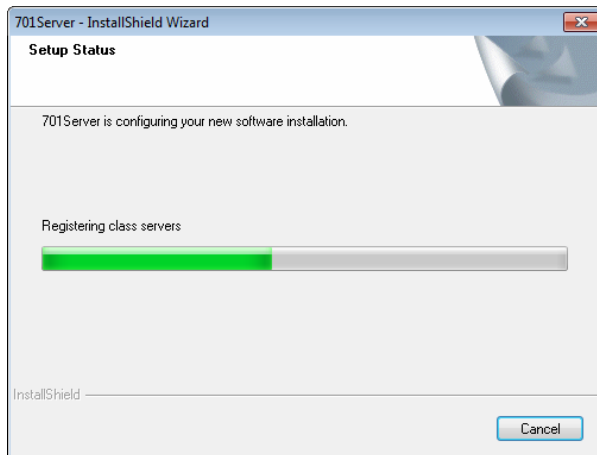


INSTALLING SOFTWARE

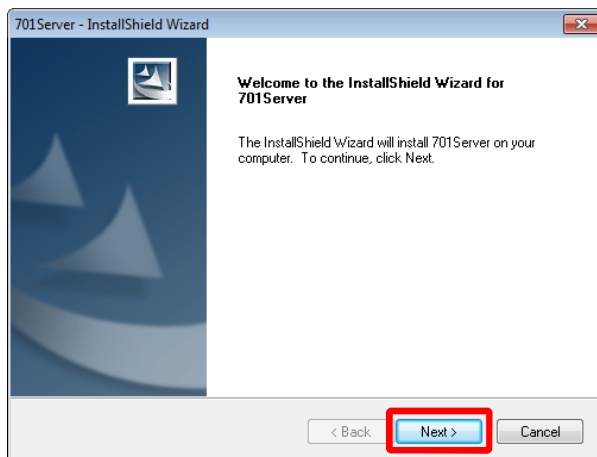
701 Server Installation continued

Click “Yes”

The following window will open:-

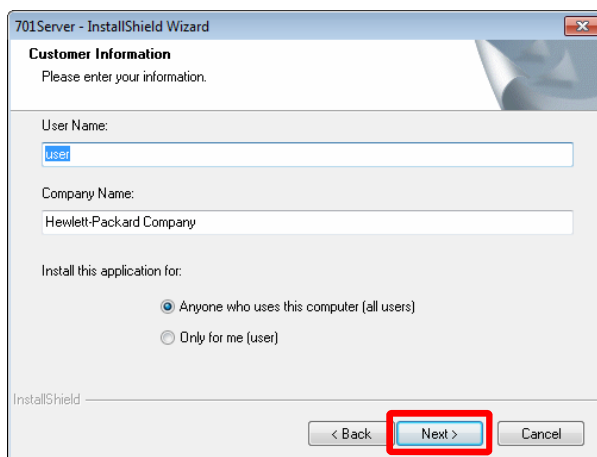


When 701 Server InstallShield Wizard has finished, the green progress bar will stop and the following window will open:-



Click “Next >”

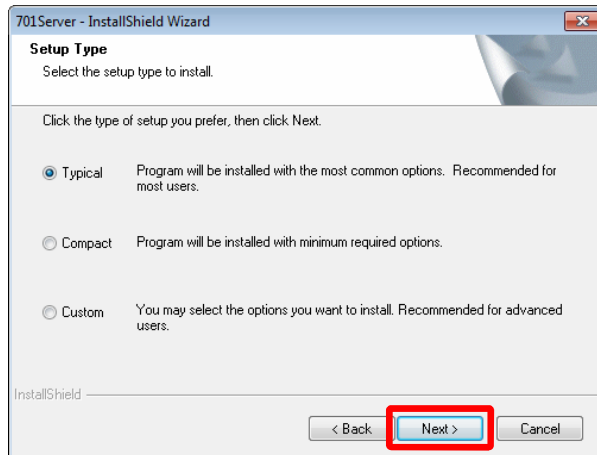
The following window will open:-



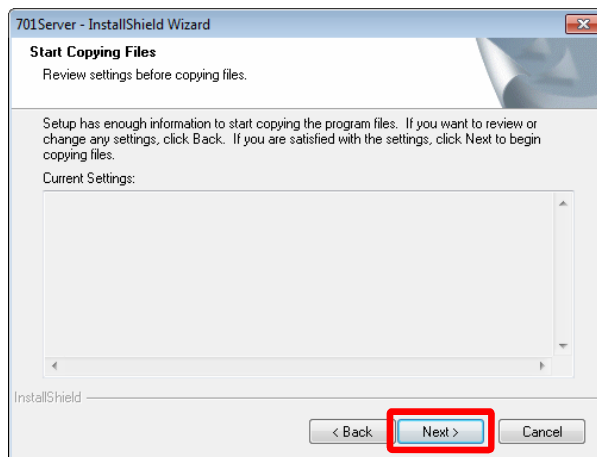
INSTALLING SOFTWARE

701 Server Installation continued

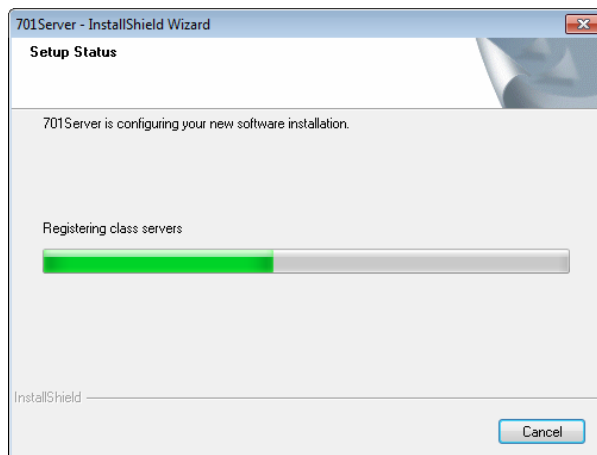
Enter a User Name and Company Name and then click “**Next >**”.
The following window will open:-



Click “**Next >**”
The following window will open:-



Click “**Next >**”
The following window will open:-

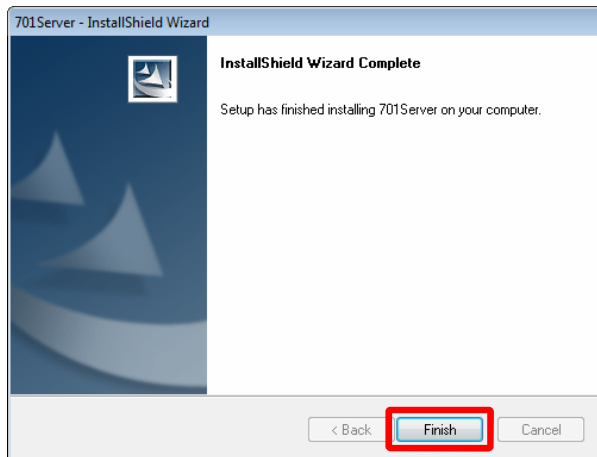


INSTALLING SOFTWARE

701 Server Installation continued

Click “Next >”

The following window will open:-



Click “Finish”.

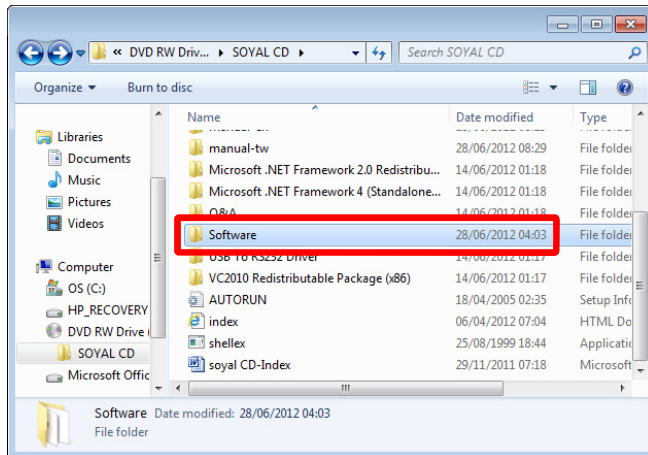
701 Server is now installed.

INSTALLING SOFTWARE

701 Client Installation

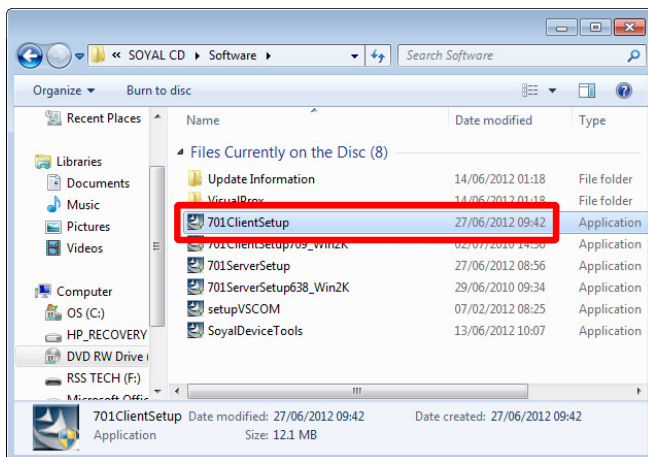
Click the “Back” button.

The following window will open:-



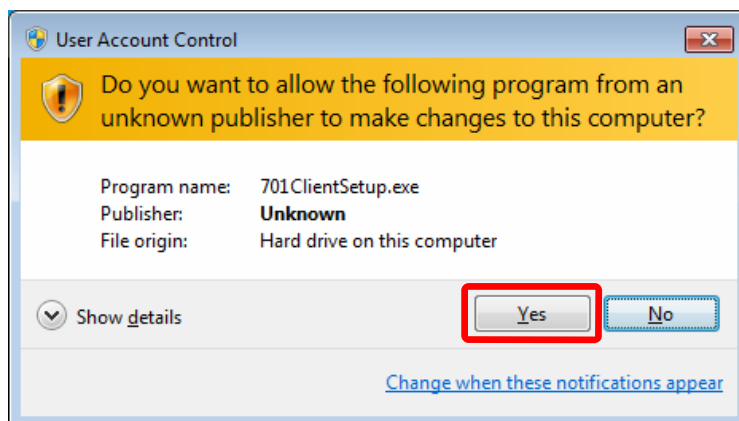
Double click “Software” folder.

The following window will open:-



Double click “701ClientSetup”.

The following window will open:-

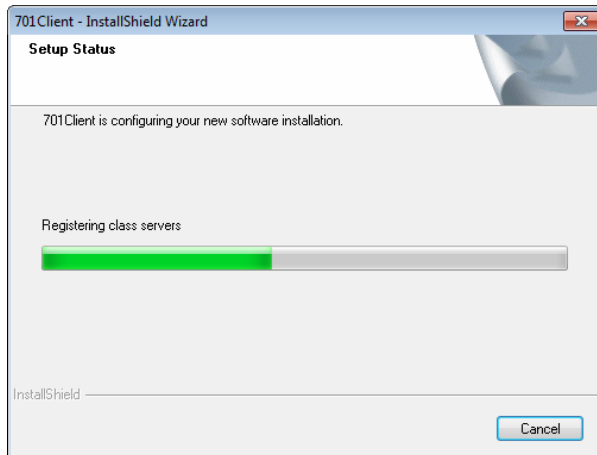


INSTALLING SOFTWARE

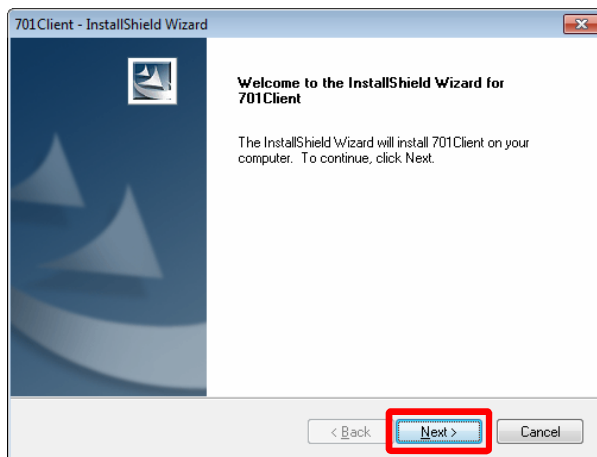
701 Client Installation continued

Click “Yes”

The following window will open:-

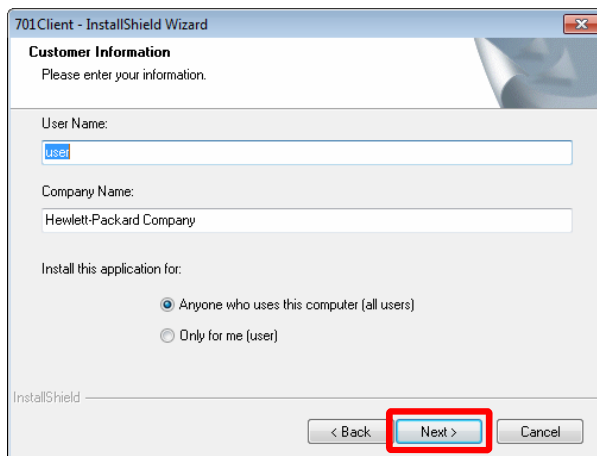


When 701 Client InstallShield Wizard has finished, the green progress bar will stop and the following window will open:-



Click “Next >”

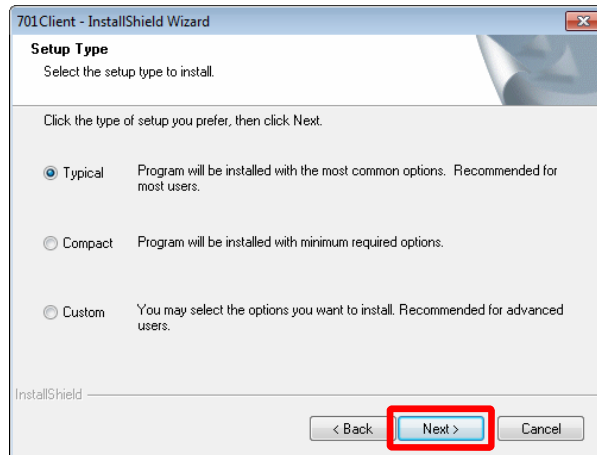
The following window will open:-



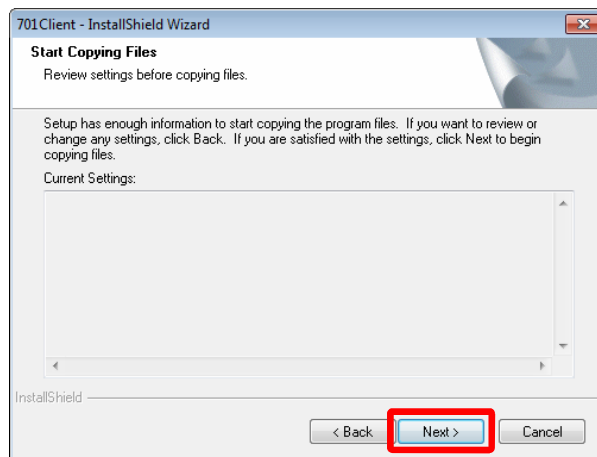
INSTALLING SOFTWARE

701 Client Installation continued

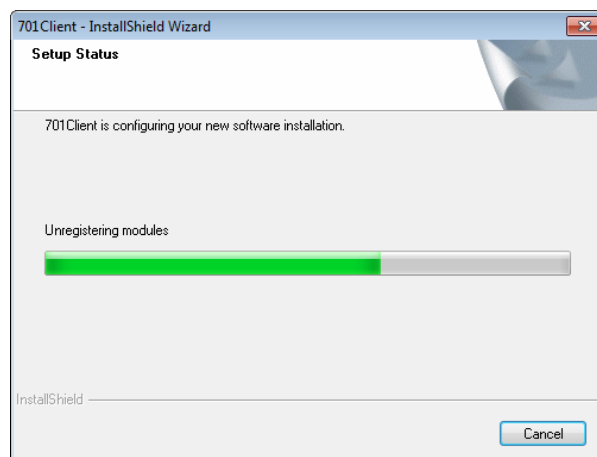
Enter a User Name and Company Name and then click “**Next >**”.
The following window will open:-



Click “**Next >**”
The following window will open:-



Click “**Next >**”
The following window will open:-

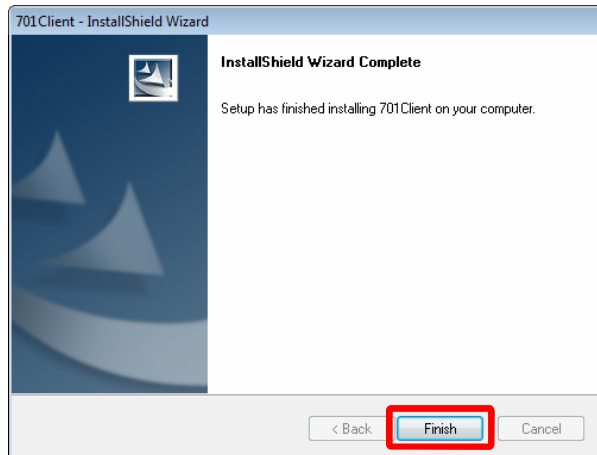


INSTALLING SOFTWARE

701 Client Installation continued

Click “Next >”

The following window will open:-



Click “Finish”.

701 Client is now installed.

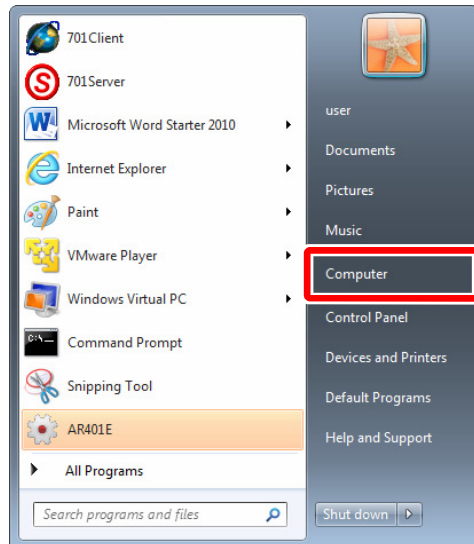
701 SERVER - LAN SETUP

701 Server Setup for LAN Based Systems

The Following setup is for a LAN based system only. When the setup is complete, the system is ready for more advanced programming.

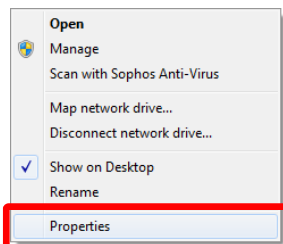
Left click the “Start” button.

The following window will open:-



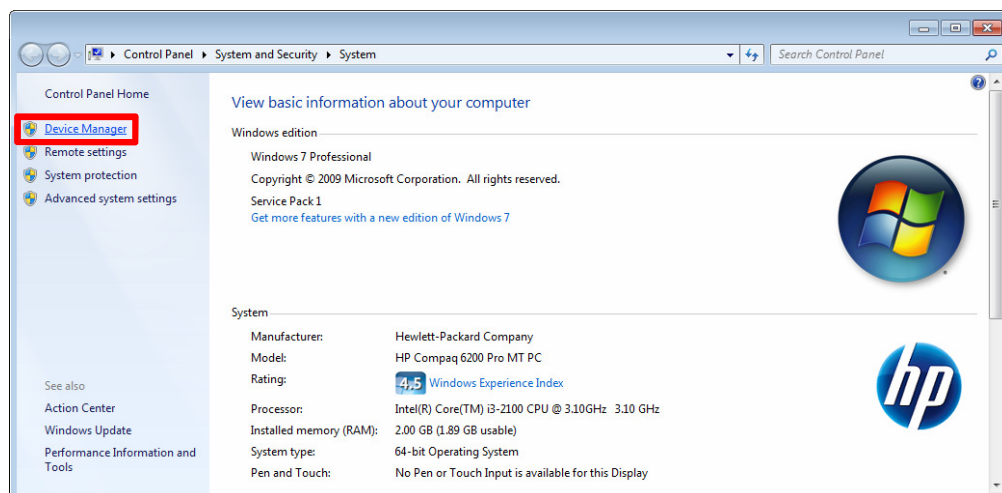
Right click “Computer” button.

The following window will open:-



Left click “Properties”.

The following window will open:-

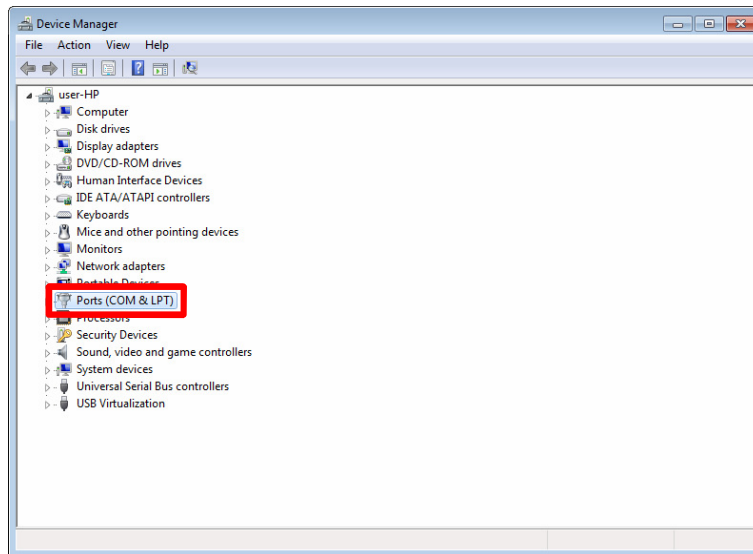


701 SERVER - LAN SETUP

701 Server Setup for LAN Based Systems continued

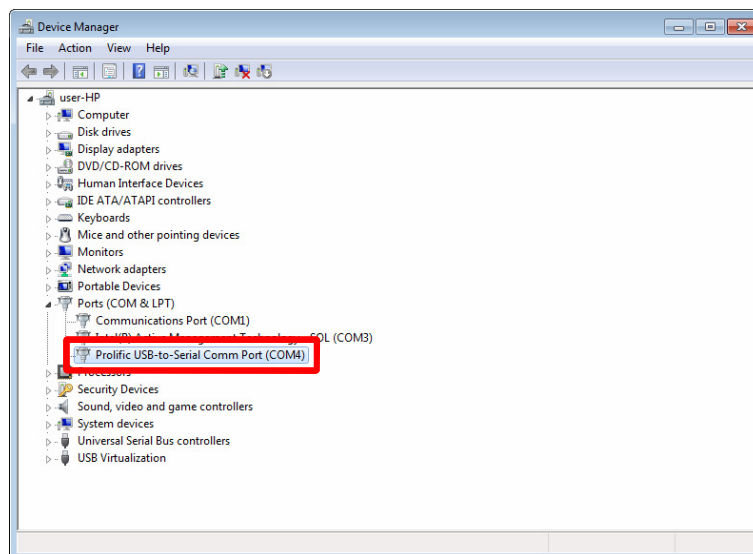
Left click “Device Manager”.

The following window will open:-



Double click “Ports (COM & LPT)”.

The following window will open:-

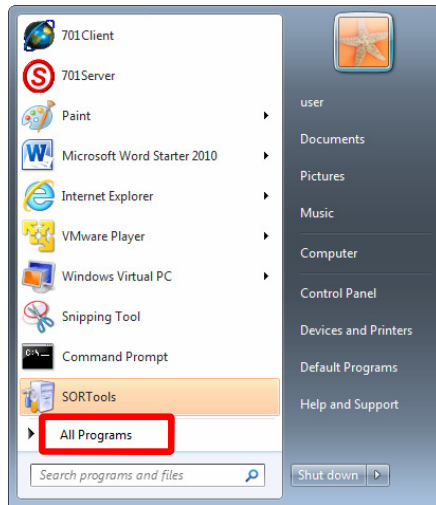


Note the COM port number as it will be used in the LAN setup.
Close the “Device Manager” WINDOW.

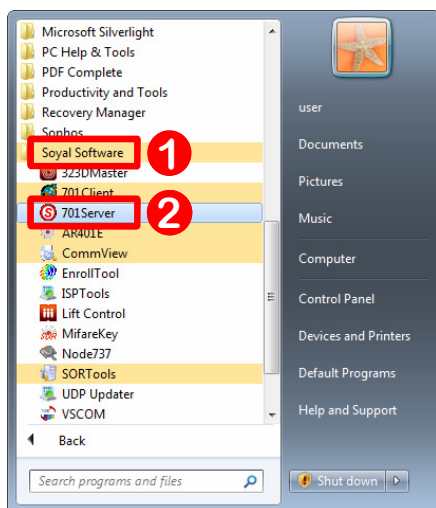
701 SERVER - LAN SETUP

701 Server Setup for LAN Based Systems continued

Left click on the “Start” button.
The following window will open:-

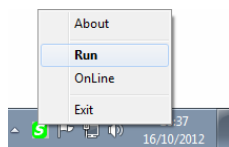


Left click on the “All Programs”.
The following window will open:-



① Left click “Soyal Software” folder.

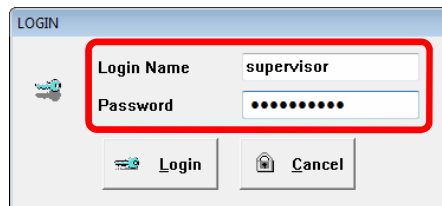
② Double click “701Server”.



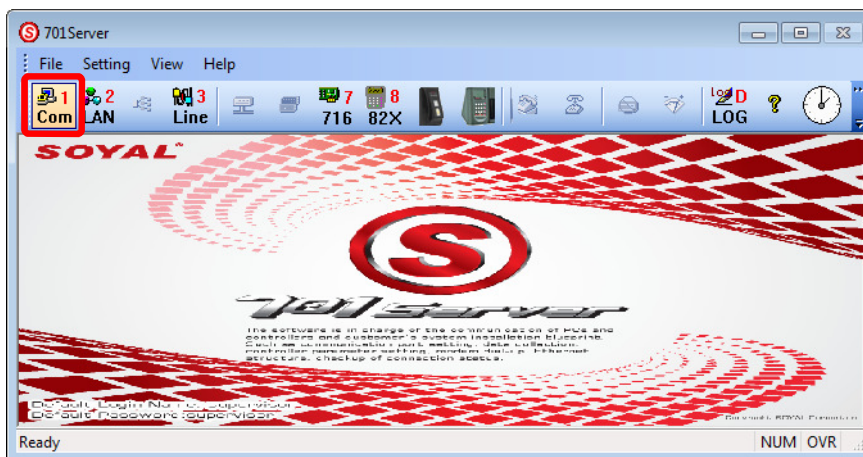
Right click 701 Server icon on task bar and left click “Run”.
The following window will open:-

701 SERVER - LAN SETUP

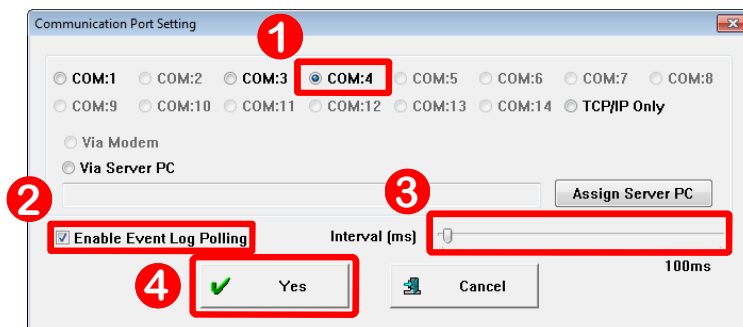
701 Server Setup for LAN Based Systems continued



Enter Login Name and Password, both of these are set as supervisor.
The following window will open:-



Left click “1 COM” button.
The following window will open:-

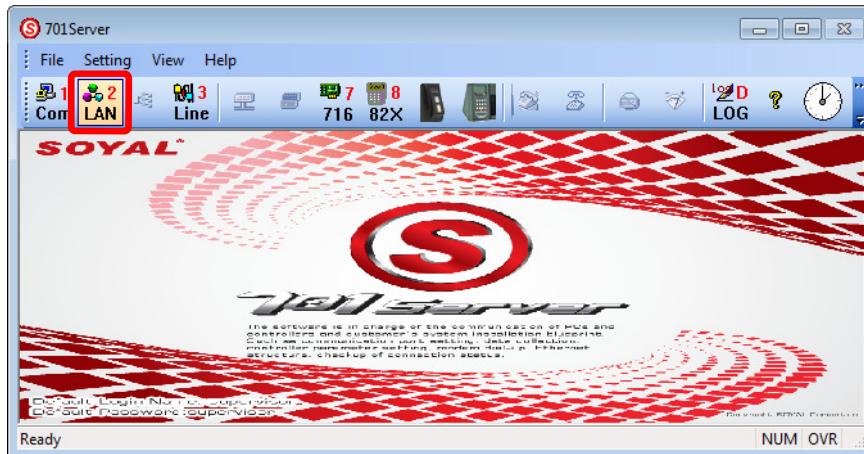


- ① Left click on the relevant COM number.
- ② Ensure “Enable Event Log Polling” is ticked.
- ③ The Polling Interval can be adjusted, if faster polling time is required slide to the left.
- ④ Click “Yes”.

The Communication Port Setting window will close.

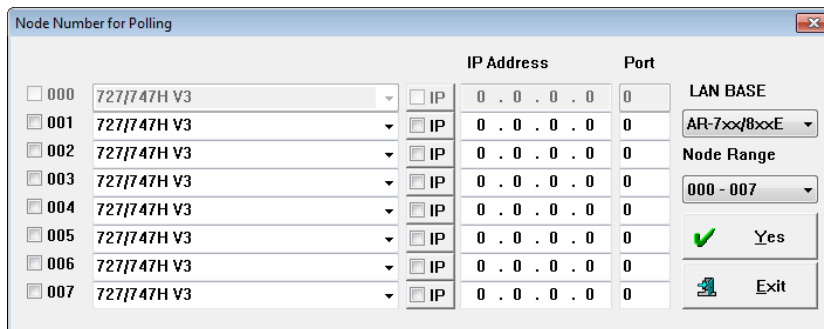
701 SERVER - LAN SETUP

701 Server Setup for LAN Based Systems continued

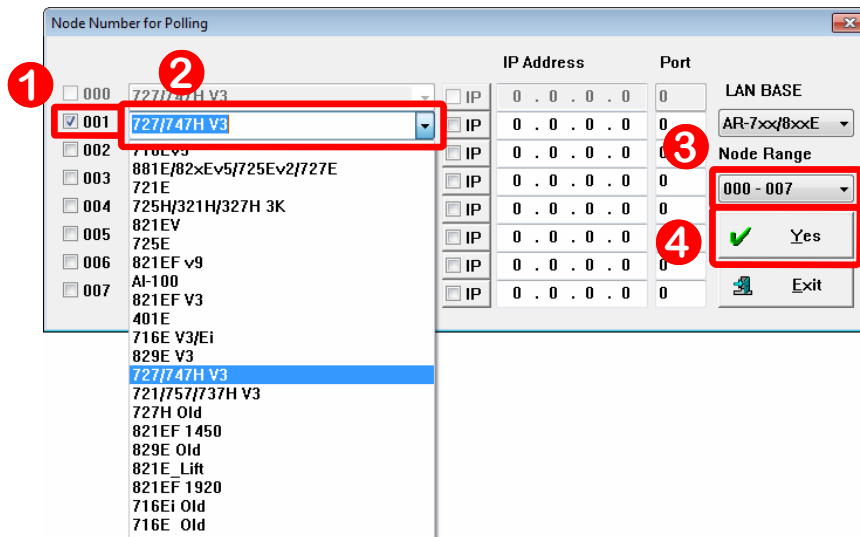


Left click “2 LAN” button.

The following window will open:-



Setup the LAN configuration as follows:-

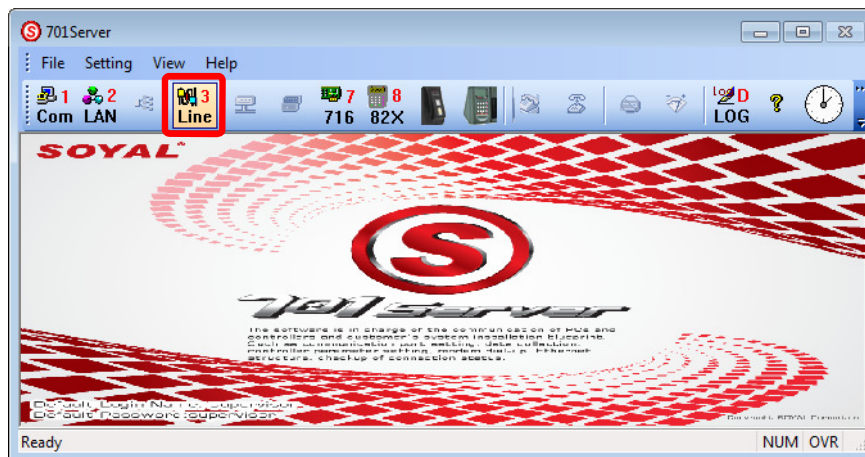


- ① Tick boxes 1 to 7 for each controller attached to the system. See relevant controller manual for details.
- ② Select controller type from drop-down box. See relevant controller manual for details.
- ③ Select Node Range for controllers, this will change the numbers of the tick boxes.
- ④ Click “Yes”.

The Node Number for Polling window will close.

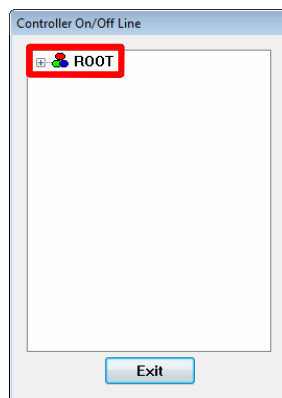
701 SERVER - LAN SETUP

701 Server Setup for LAN Based Systems continued



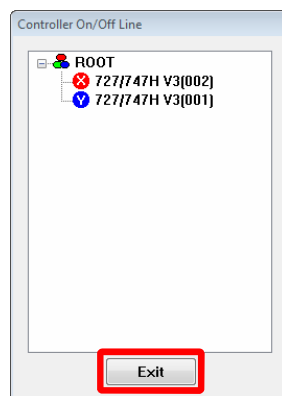
Left click “3 Line” button.


The following window will open:-




Left click on the  next to ROOT.

ROOT will expand and show the controllers connected on the network.



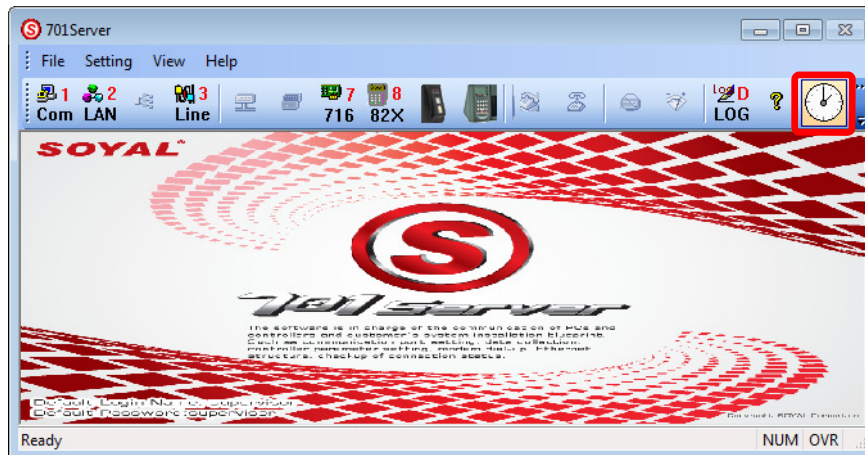
 Indicates the controller is online and is communicating with the PC.

 Indicates the controller is offline and is not communicating with the PC. Ensure there are no problems with the communication cabling and check the LAN settings as shown on page 22 of this manual.

Click “Exit”

701 SERVER - LAN SETUP

701 Server Setup for LAN Based Systems continued



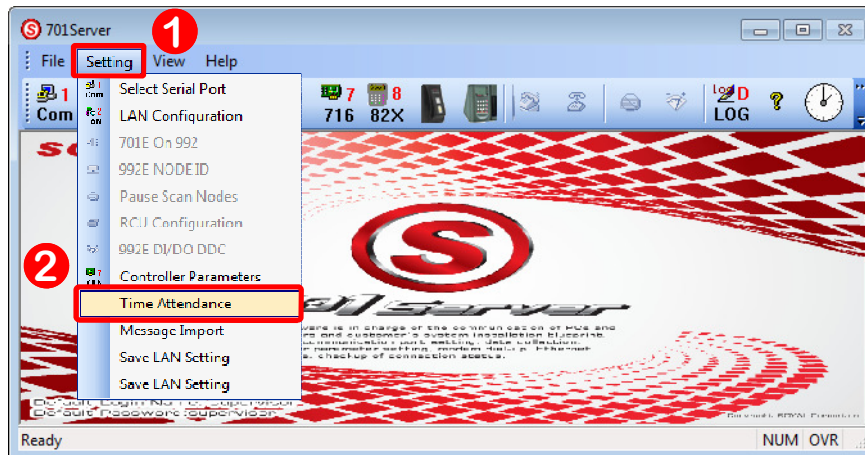
Left click “Clock” button.

The software will change the time and date on all of the controllers to match the time and date set on the PC.

The set up is now complete, tokens can now be added and Door Groups and Time Zones set as required. See 701 Server and 701 Client User Manual for full details.

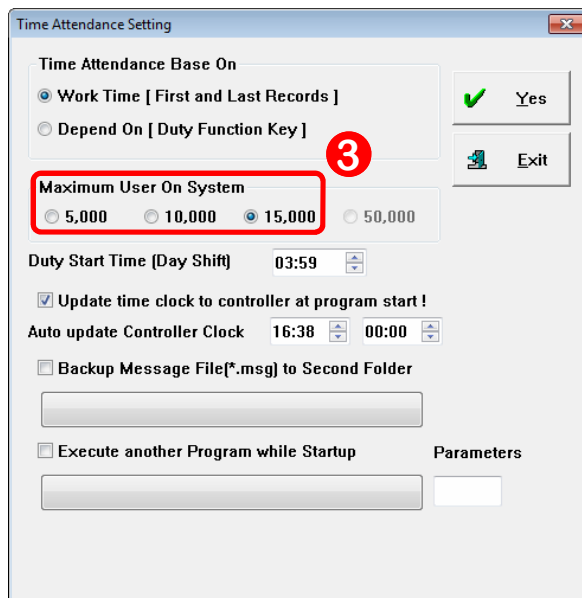
701 SERVER - LAN SETUP

701 Server Setup for LAN Based Systems continued



① Left click "Setting".

② Click "Time Attendance".



③ Click on the token quantity required, this will depend on the type of controller connected to the system.

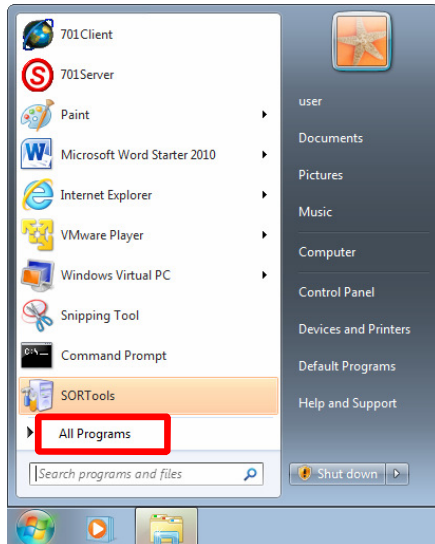
701 SERVER - IP SETUP

701 Server Setup for IP Based Systems

The Following setup is for an IP based system only. When the setup is complete, the system is ready for more advanced programming.

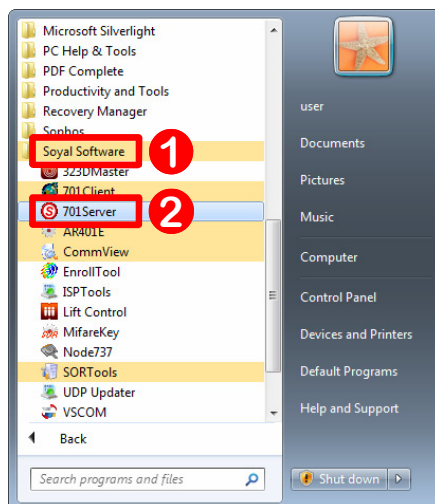
Left click on the “Start” button.

The following window will open:-



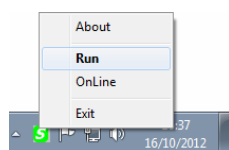
Left click “All Programs”.

The following window will open:-



① Left click “Soyal Software” folder.

② Double click “701Server”.

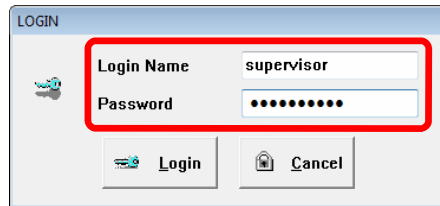


Right click 701 Server icon on task bar and left click “Run”.

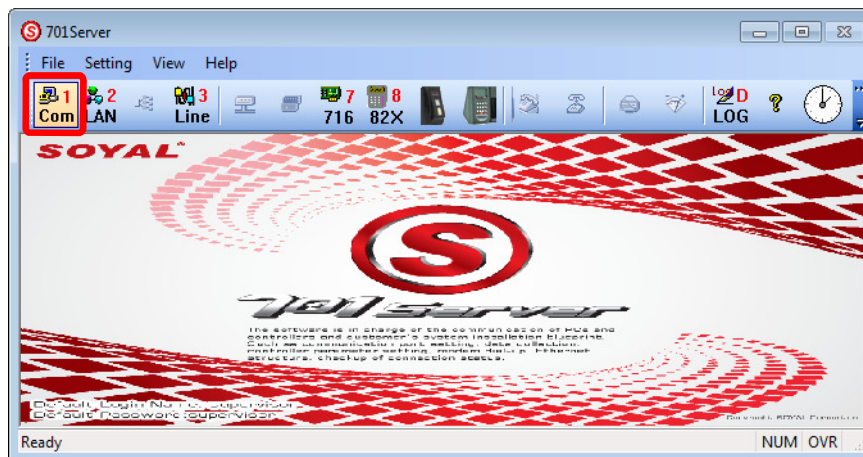
The following window will open:-

701 SERVER - IP SETUP

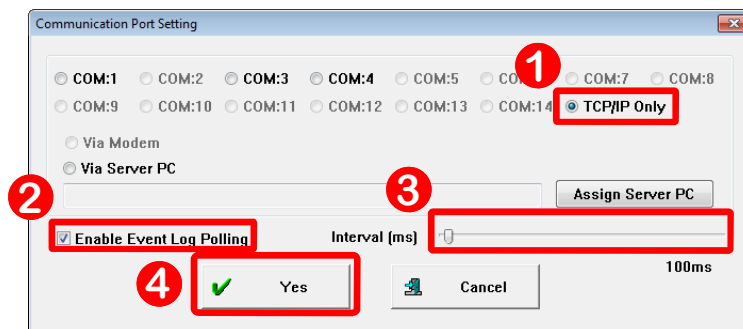
701 Server Setup for IP Based Systems continued



Enter Login Name and Password, both of these are set as supervisor.
The following window will open:-



Left click “1 COM” button.
The following window will open:-

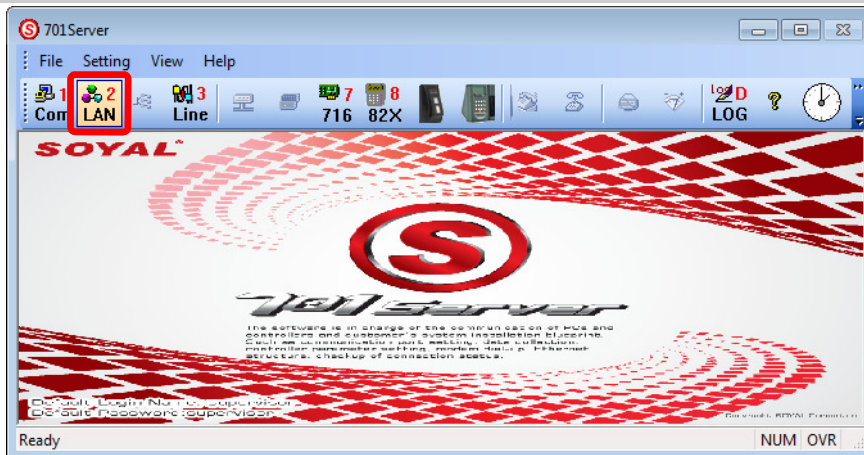


- ① Left click on “TCP/IP Only”.
- ② Ensure “Enable Event Log Polling” is ticked.
- ③ The Polling Interval can be adjusted, if faster polling time is required slide to the left.
- ④ Click “Yes”.

The Communication Port Setting window will close.

701 SERVER - IP SETUP

701 Server Setup for IP Based Systems



Left click “2 LAN” button.
The following window will open:-

Node	Controller	IP Address	Port
000	727/747H V3	0 . 0 . 0 . 0	0
001	727/747H V3	0 . 0 . 0 . 0	0
002	727/747H V3	0 . 0 . 0 . 0	0
003	727/747H V3	0 . 0 . 0 . 0	0
004	727/747H V3	0 . 0 . 0 . 0	0
005	727/747H V3	0 . 0 . 0 . 0	0
006	727/747H V3	0 . 0 . 0 . 0	0
007	727/747H V3	0 . 0 . 0 . 0	0

Set up the LAN configuration as follows:-

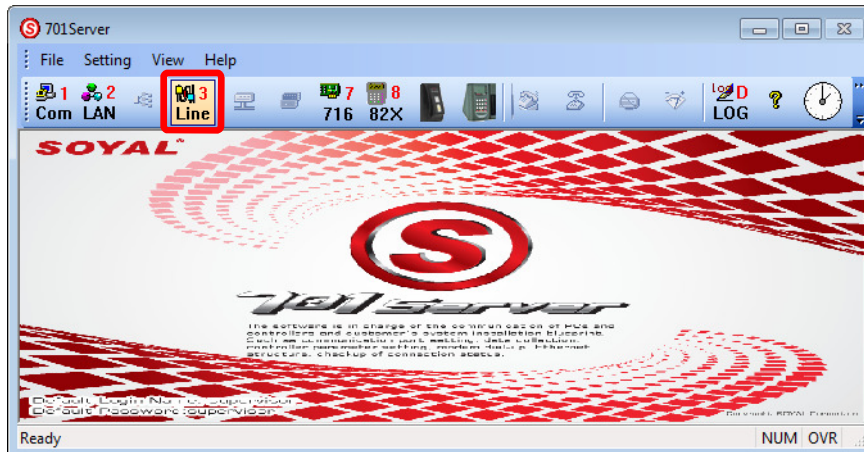
Node	Controller	IP	IP Address	Port
000	727/747H V3	<input type="checkbox"/>	0 . 0 . 0 . 0	0
001	727/747H V3	<input checked="" type="checkbox"/>	0 . 0 . 0 . 0	0
002	716EV3	<input type="checkbox"/>	0 . 0 . 0 . 0	0
003	881E/82xEv5/725Ev2/727E	<input type="checkbox"/>	0 . 0 . 0 . 0	0
004	721E	<input type="checkbox"/>	0 . 0 . 0 . 0	0
005	725H/321H/327H 3K	<input type="checkbox"/>	0 . 0 . 0 . 0	0
006	821EV	<input type="checkbox"/>	0 . 0 . 0 . 0	0
007	821EF v9	<input type="checkbox"/>	0 . 0 . 0 . 0	0

- ① Tick boxes 1 to 7 for each controller attached to the system. See relevant controller manual for details.
- ② Select controller type from drop-down box. See relevant controller manual for details.
- ③ Tick the IP box.
- ④ & ⑤ Enter the IP Address and Port number, which need to be obtained from the system administrator. See AR-737CM manual for details.
- ⑥ Select Node Range for controllers, this will change the numbers of the tick boxes.
- ⑦ Click “Yes”.

The Node Number for Polling window will close.

701 SERVER - IP SETUP

701 Server Setup for IP Based Systems continued



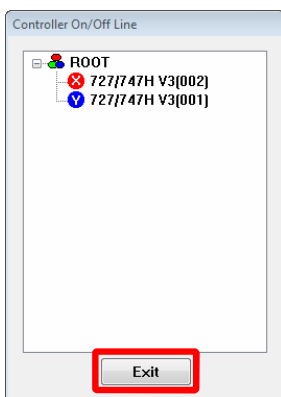
Left click “3 Line” button.


The following window will open:-




Left click on the  next to ROOT.

ROOT will expand and show the controllers connected on the network.



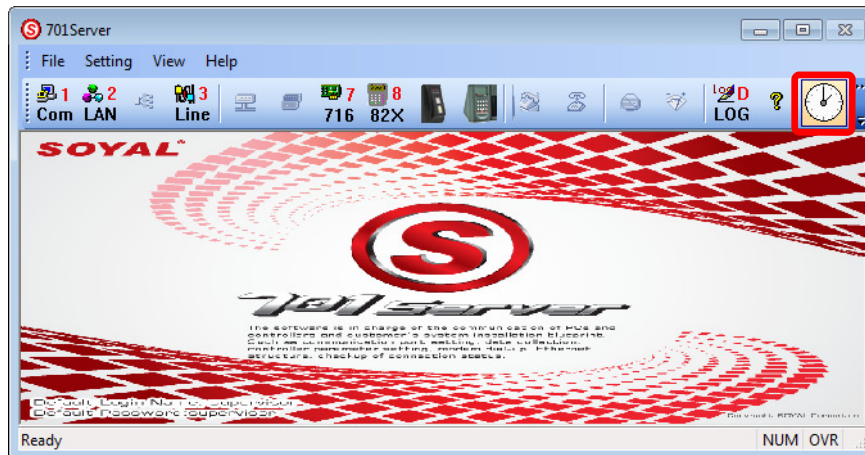
 Indicates the controller is online and is communicating with the PC.

 Indicates the controller is offline and is not communicating with the PC. Ensure there are no problems with the communication cabling and check the IP settings as shown on page 25 of this manual.

Click “Exit”

701 SERVER - IP SETUP

701 Server Setup for IP Based Systems continued



Left click “Clock” button.

The software will change the time and date on all of the controllers to match the time and date set on the PC.

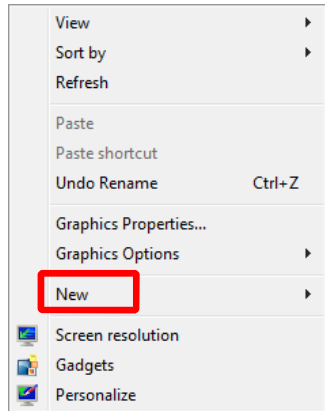
The set up is now complete, tokens can now be added and Door Groups and Time Zones set as required. See 701 Server and 701 Client User Manual for full details.

UNINSTALLING SOFTWARE

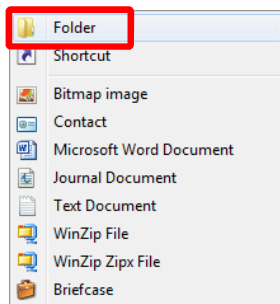
Backing Up the Database

Before uninstalling the software, it is important to make a back-up of the database. By default the database is backed up to the “701 Client” folder on the C drive, which needs to be deleted during uninstall, therefore a new folder needs to be made. The following pages will show how to add a new folder and back up the database.

Right click on the desktop.
The following window will open



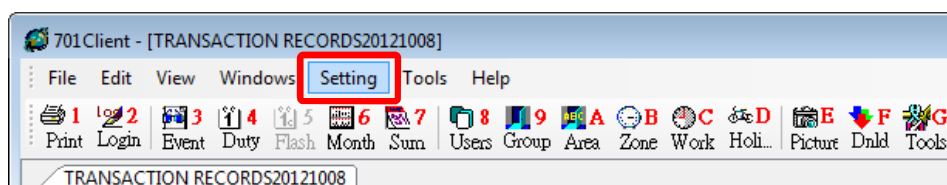
Left click “New”.
The following window will open:-



Left click “Folder”.
A folder will be placed on the desktop. Rename it “Soyal Backup”.
Open “701 Client” software.
The following window will appear:-



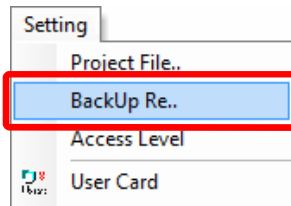
Enter Login Name and Password, both of these are set as supervisor.
The following window will open:-



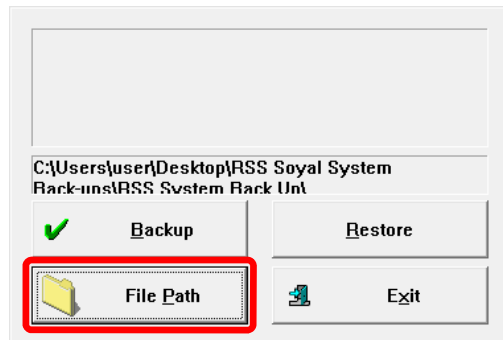
Left click “Setting”.
The following window will open:-

UNINSTALLING SOFTWARE

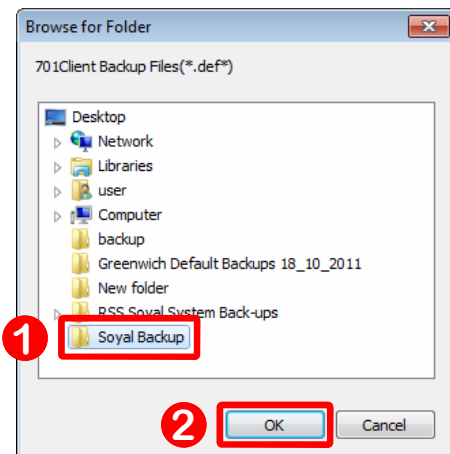
Backing Up the Database continued



Left click “BackUp Re..”.
The following window will open:-

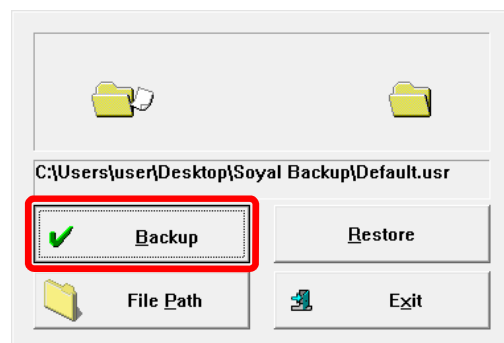


Left click “File Path”.
The following window will open:-



- ① Select “Soyal Backup” folder from list.
- ② Left Click “OK”.

The “Browse for Folder” window will close and the backup window will appear.



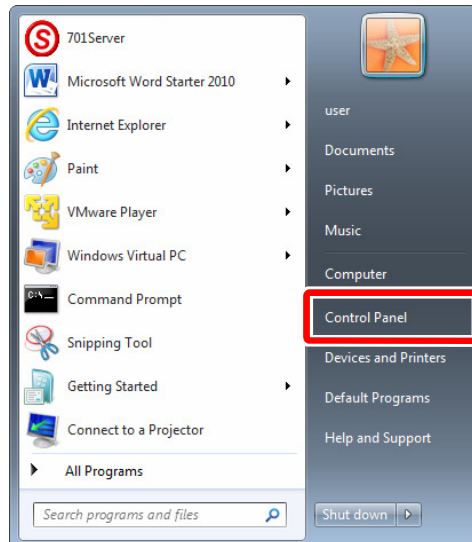
Left click “Backup”.
The system will now back up the database.

UNINSTALLING SOFTWARE

Uninstalling Soyol Device Tools

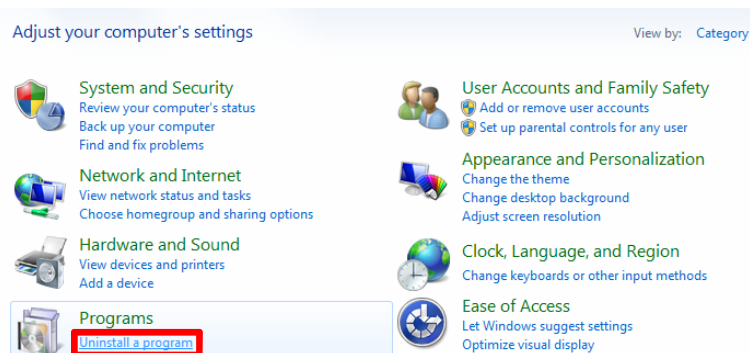
Left click Start button.

The following window will open:-



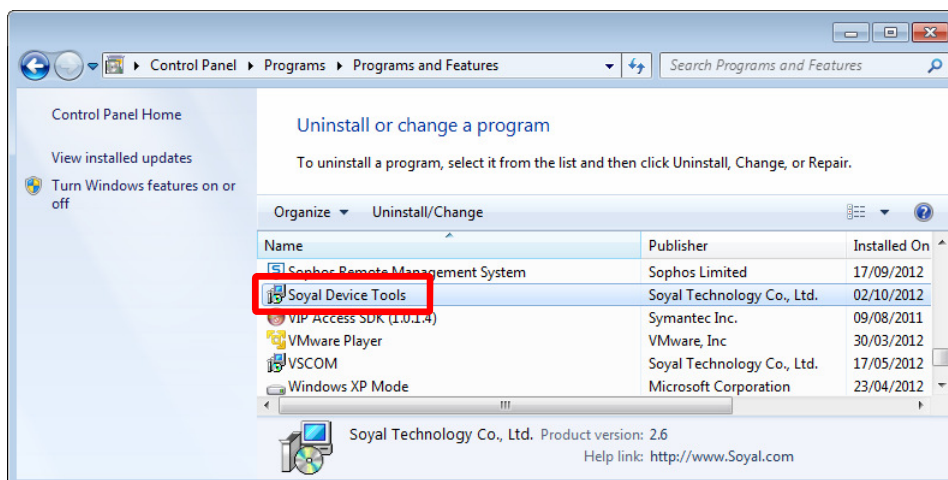
Left click "Control Panel".

The following window will open:-



Left click "Uninstall a program".

The following window will open:-

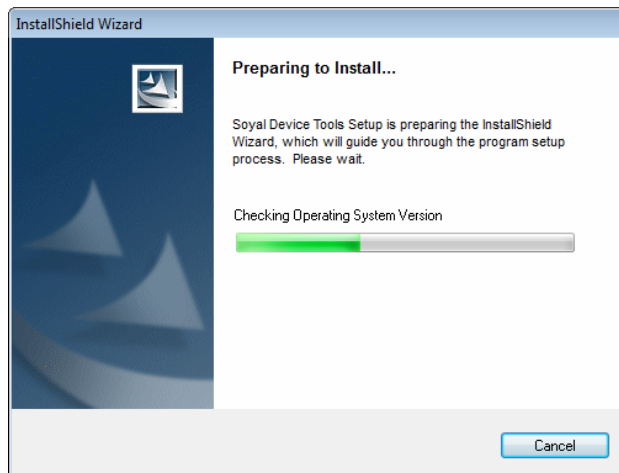


Double click "Soyol Device Tools".

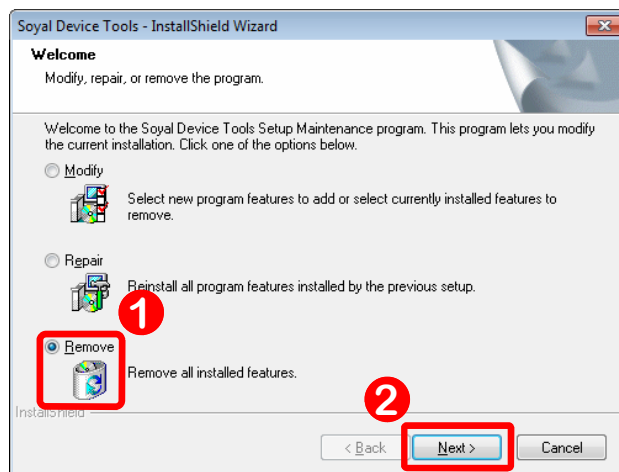
The following window will open:-

UNINSTALLING SOFTWARE

Uninstalling Soyal Device Tools continued



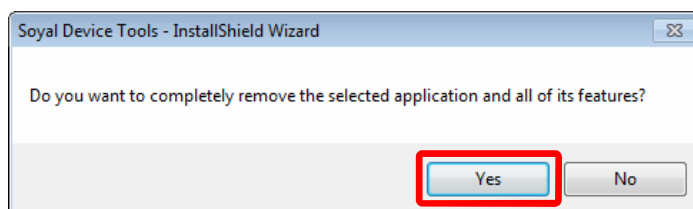
When Soyal Device Tools Setup has finished, the green progress bar will stop and the following window will open:-



① Left click “Remove”.

② Left click “Next”.

The following window will open:-

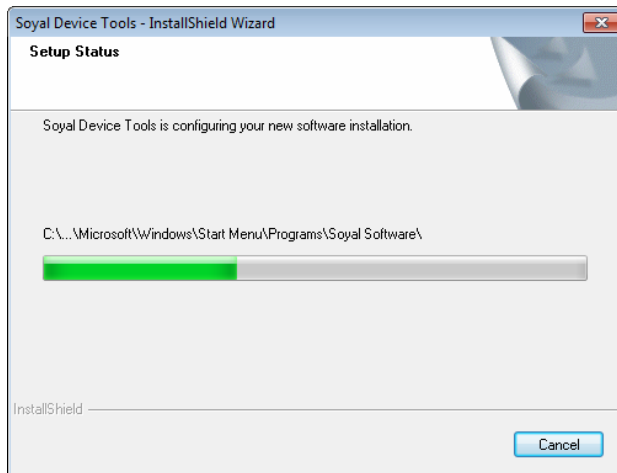


Left click “Yes”.

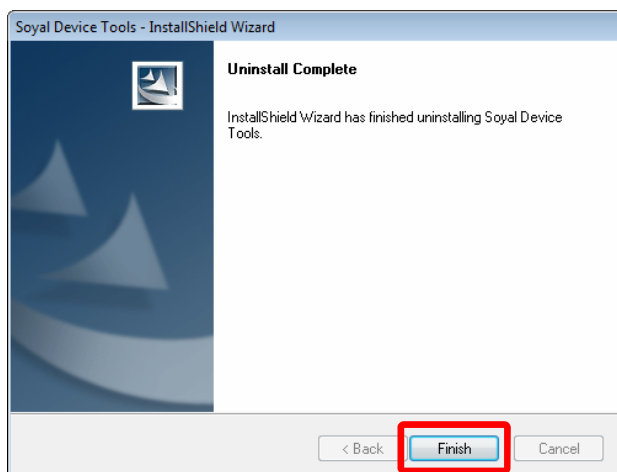
The following window will open:-

UNINSTALLING SOFTWARE

Uninstalling Soyol Device Tools continued



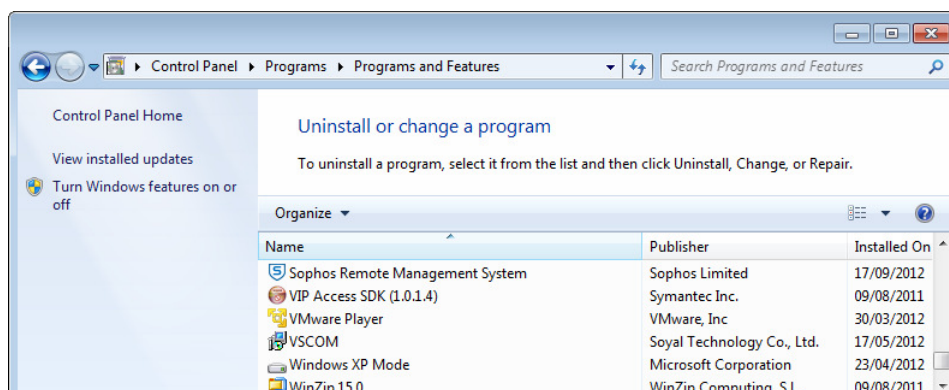
When Soyol Device Tools has finished, the green progress bar will stop and the following window will open:-



Left click "Finish".

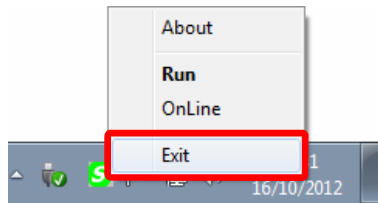
Soyol Device Tools has been uninstalled.

The Control Panel Uninstall Program window will reappear and Soyol Device Tools will be removed.



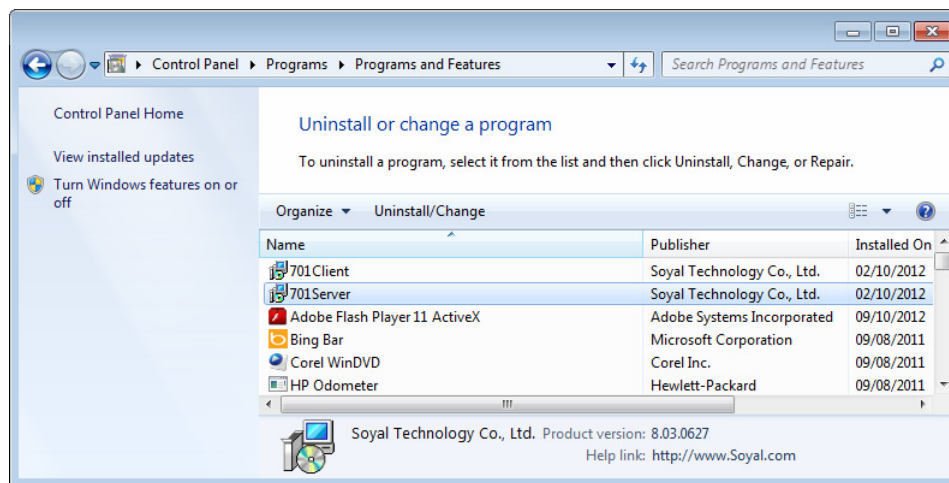
UNINSTALLING SOFTWARE

Uninstalling 701 Server



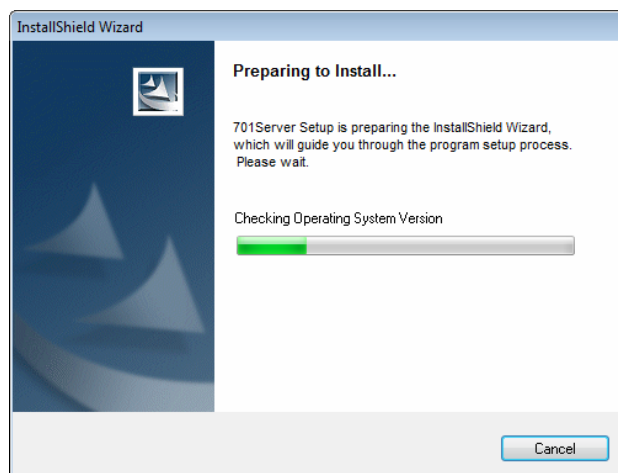
Before 701 can be uninstalled, exit the program.

Right click on the 701 Server icon on the bottom right of the taskbar and left click “Exit”.



Double click “701Server”.

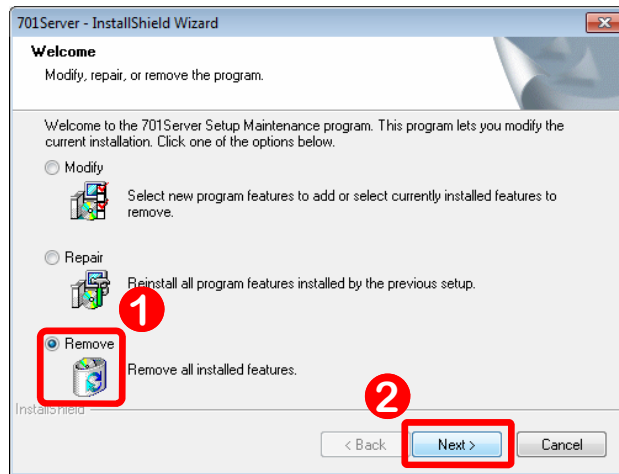
The following window will open:-



When 701Server Setup has finished, the green progress bar will stop and the following window will open:-

UNINSTALLING SOFTWARE

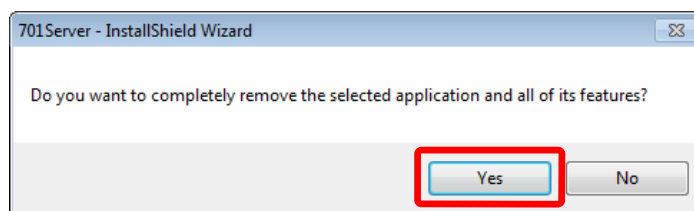
Uninstalling 701 Server continued



① Left click “Remove”.

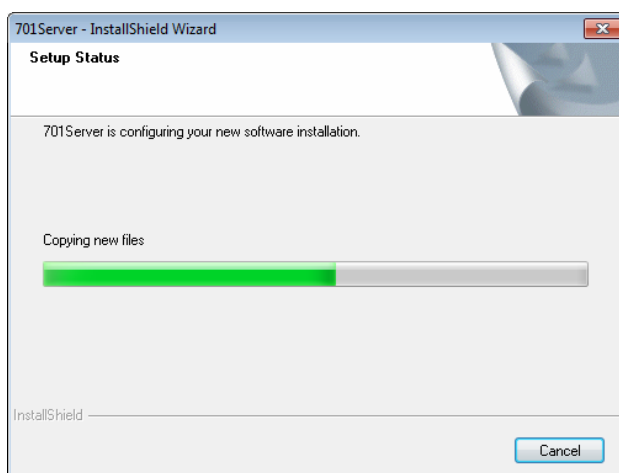
② Left click “Next”.

The following window will open:-



Left click “Yes”.

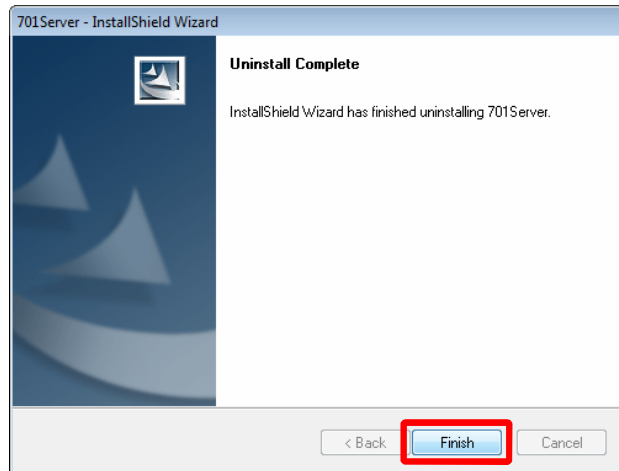
The following window will open:-



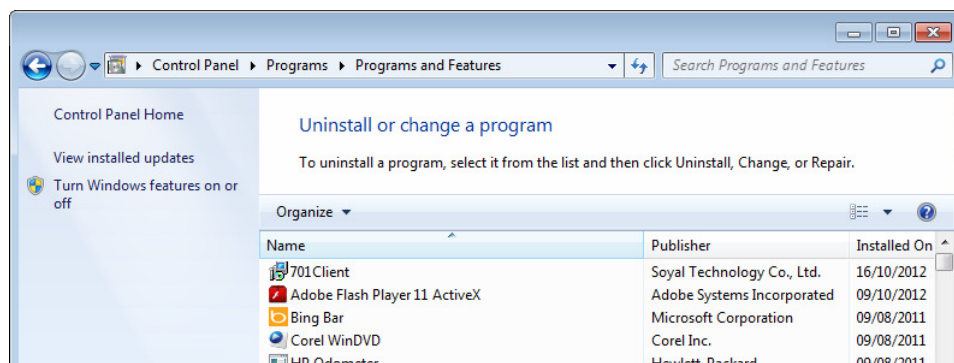
When 701Server has finished, the green progress bar will stop and the following window will open:-

UNINSTALLING SOFTWARE

Uninstalling 701 Server continued

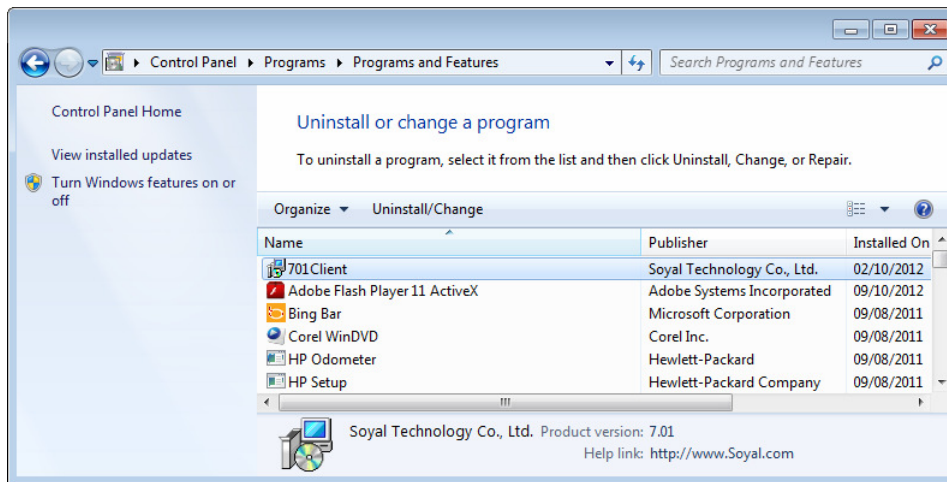


Left click “Finish”, 701 Server has been uninstalled.
The Control Panel Uninstall Program window will reappear and 701Server will be removed.

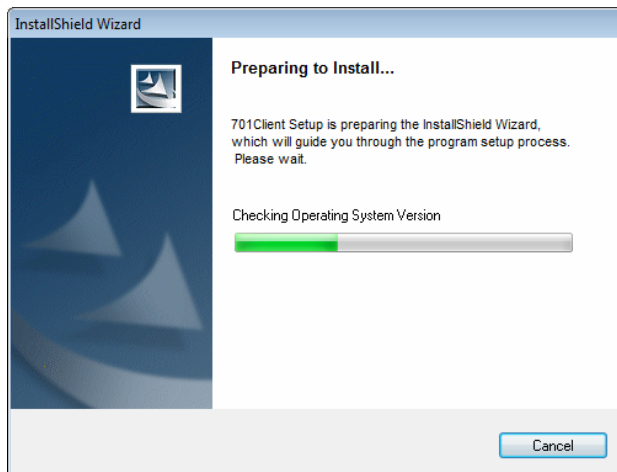


UNINSTALLING SOFTWARE

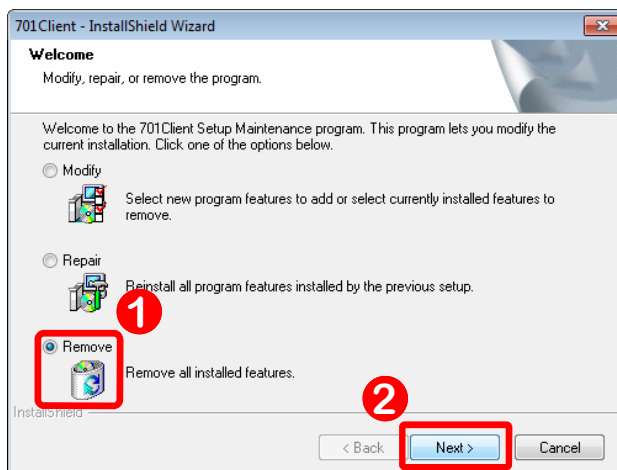
Uninstalling 701 Client



Double click "701Client".
The following window will open:-



When 701Client Setup has finished, the green progress bar will stop and the following window will open:-



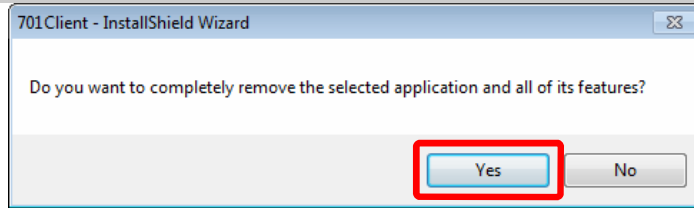
① Left click "Remove".

② Left click "Next".

The following window will open:-

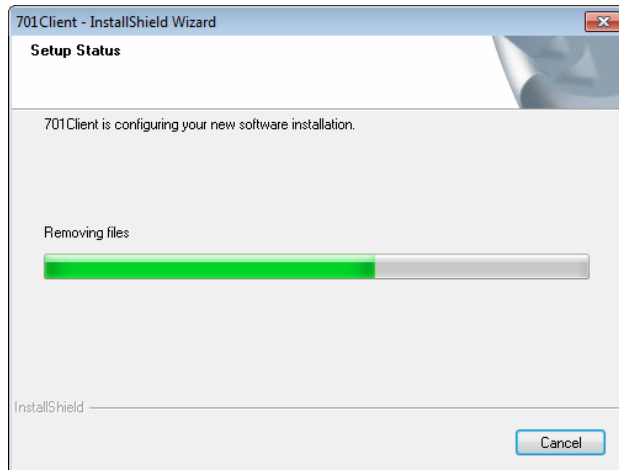
UNINSTALLING SOFTWARE

Uninstalling 701 Client continued

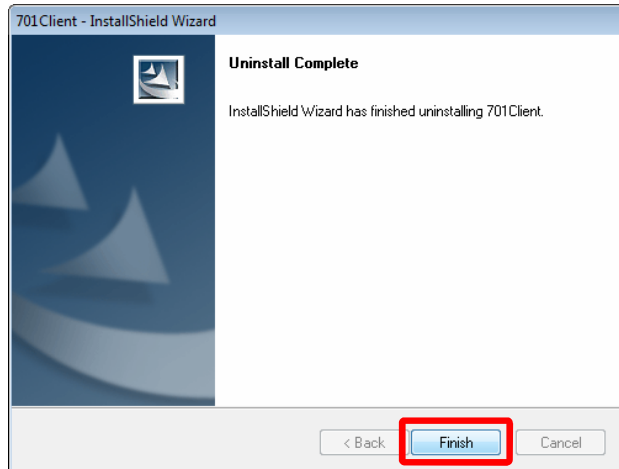


Left click “Yes”.

The following window will open:-

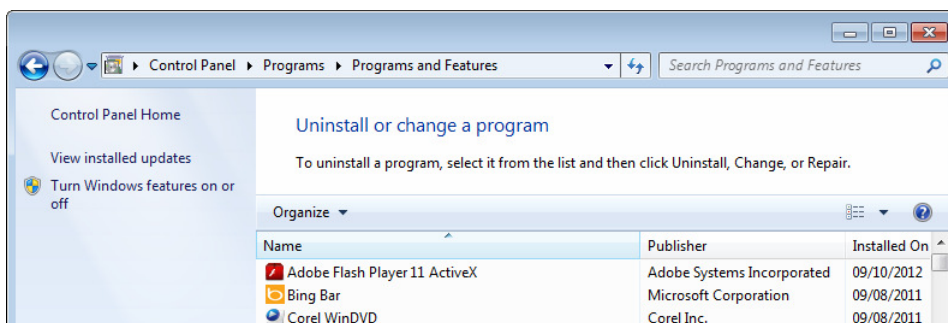


When 701Client has finished, the green progress bar will stop and the following window will open:-



Left click “Finish”, 701 Client has been uninstalled.

The Control Panel Uninstall Program window will reappear and 701Client will be removed. Close Control Panel.

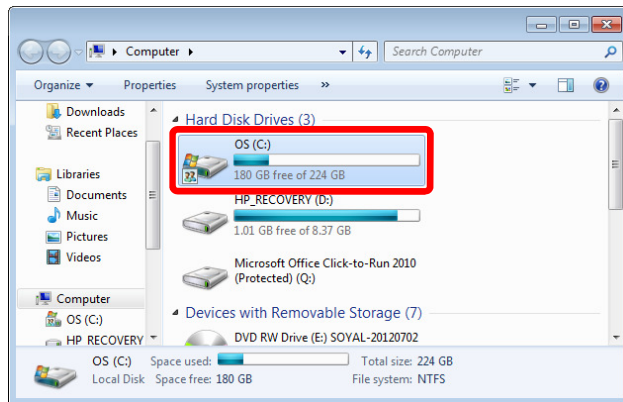


UNINSTALLING SOFTWARE

Deleting Program Folders

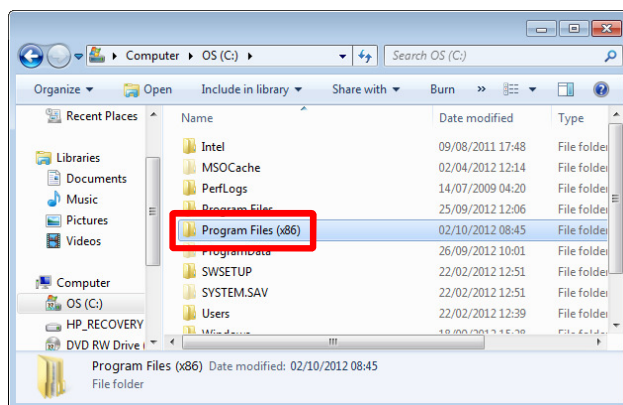
Open “My Computer”.

The following window will open:-



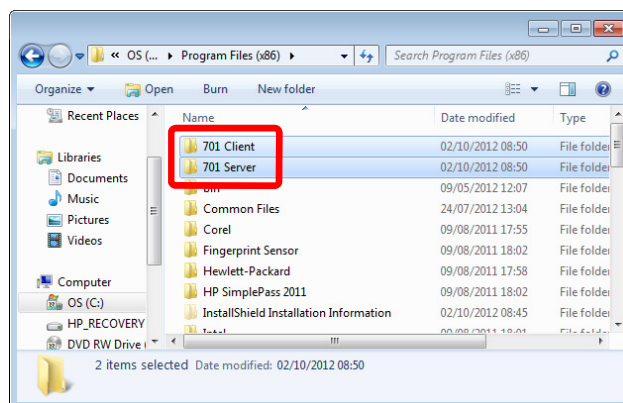
Double click “OS (C:)”.

The following window will open:-



Double click “Program Files (x86)”.

The following window will open:-

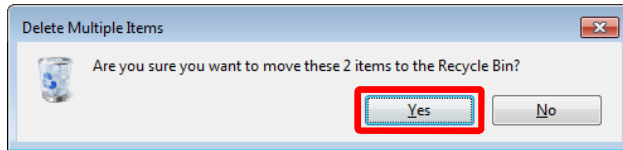


Delete both 701 Client and 701 Server folders

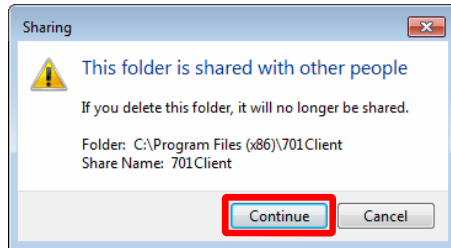
The following window will open:-

UNINSTALLING SOFTWARE

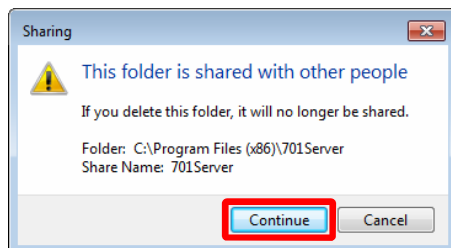
Deleting Program Folders



Left click "Yes".
The following window will open.



Left click "Continue".
The following window will open.



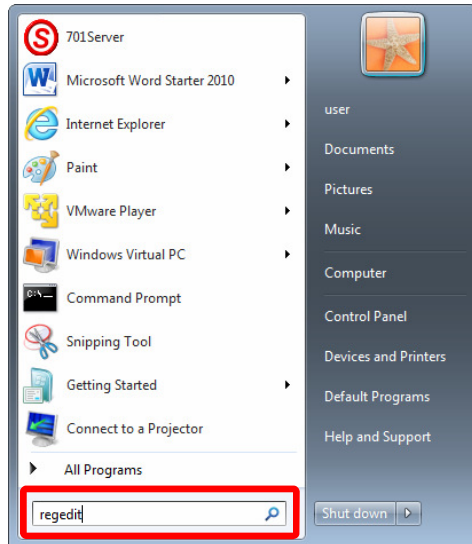
Left click "Continue".
The folders will be deleted, close the "Program Files (x86)" window.

UNINSTALLING SOFTWARE

Deleting Registry Files

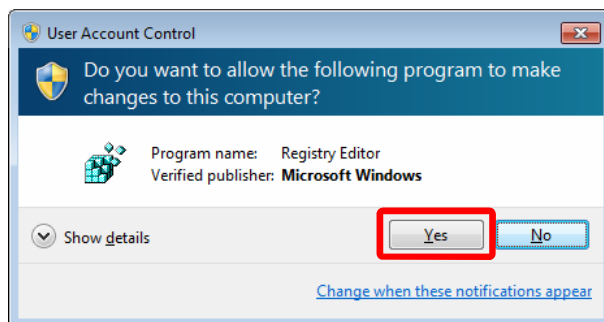
Left click “Start”.

The following window will open:-



Type regedit in the “Run Window” and press enter.

The following window will open:-

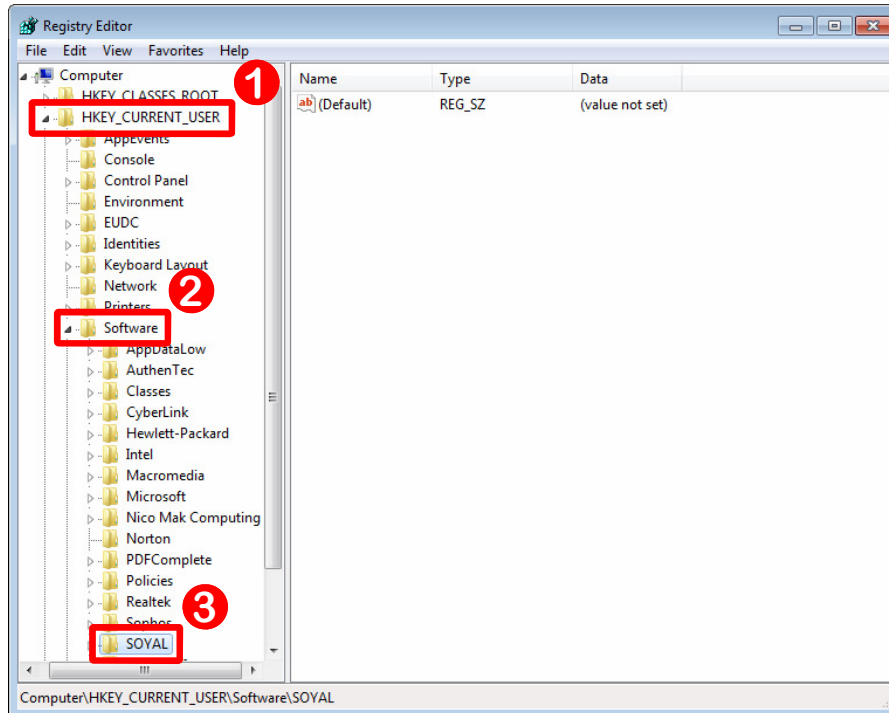


Left click “Yes”.

The following window will open:-

UNINSTALLING SOFTWARE

Deleting Registry Files continued

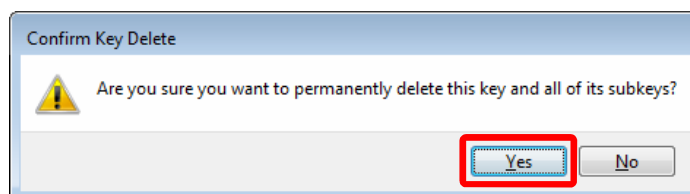


❶ Double click on “HKEY_CURRENT_USER” folder.

❷ Double click on “Software” folder.

❸ Left click on “SOYAL” folder and press delete.

The following window will open:-

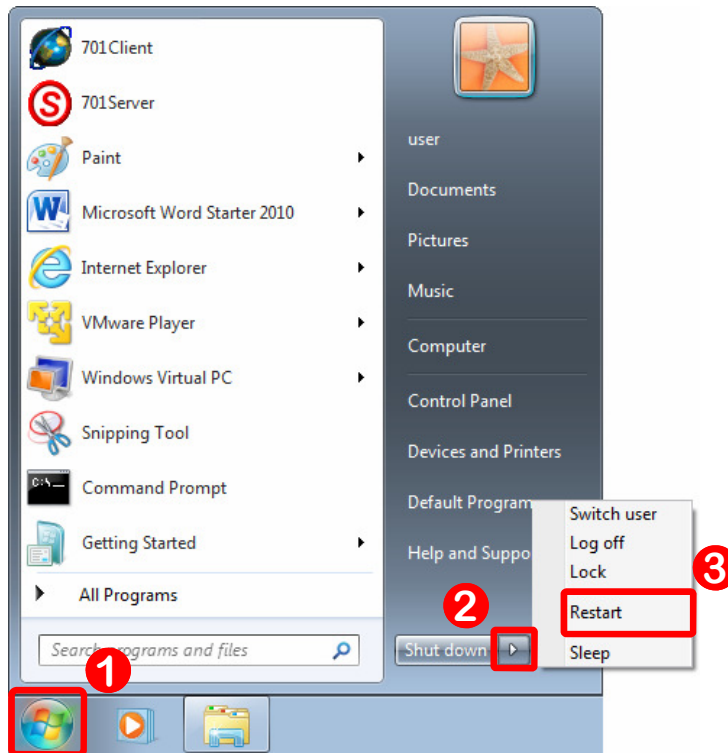


Left click “Yes”.

The following window will open:-

UNINSTALLING SOFTWARE

Deleting Registry Files continued



❶ Left click “Start”.

❷ Left click the “Shut Down Options Arrow”.

❸ Left click “Restart”.

The software has been successfully uninstalled.