

RSS IP Lite PD

IP Video Digital Dial Entrance Panel

Installer Manual

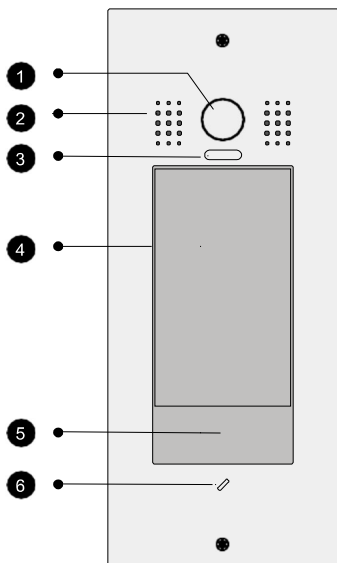


This manual is intended for Installers and provides details of all of the functions available within the Entrance Panel. A Quick Setup guide is available for initial configuration purposes.

Please read this manual carefully before using the product, and keep it for future reference.

We reserve the right to modify the specification of the product in this manual at any time without notice.

Parts and Function



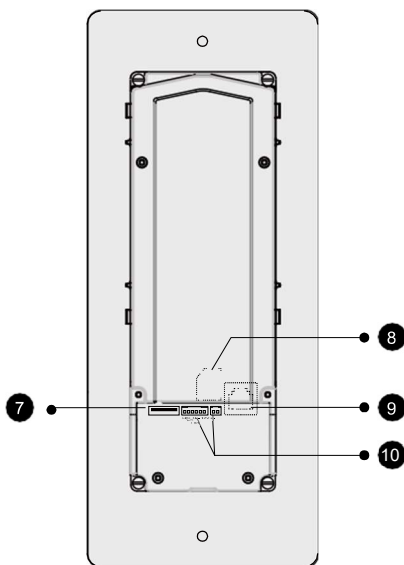
1 Camera lens

2 Speaker

3 Camera LED
Illuminates subjects in dark environments.

4 LCD screen

5 Card/token reader
Allows the door to be unlocked by using a card/token.



6 Microphone

7 USB connector

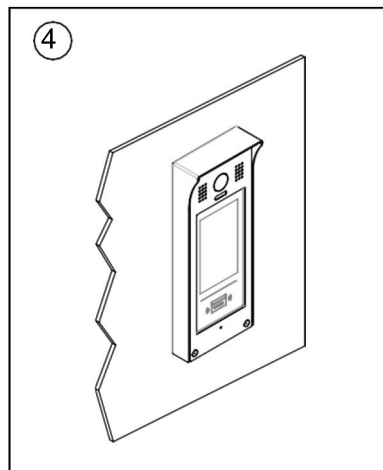
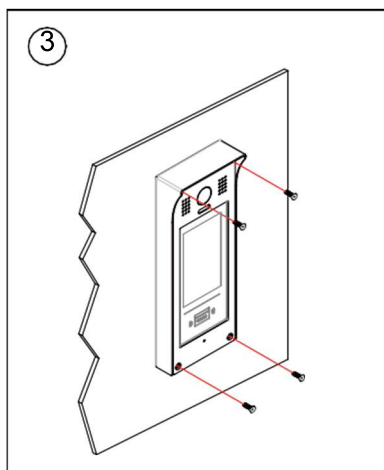
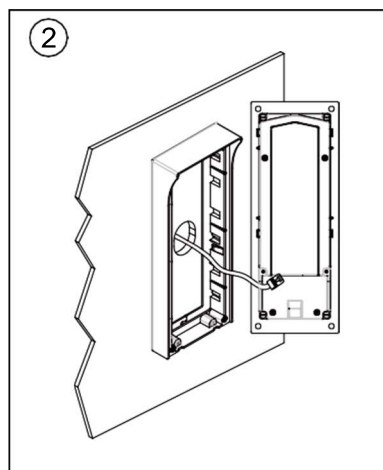
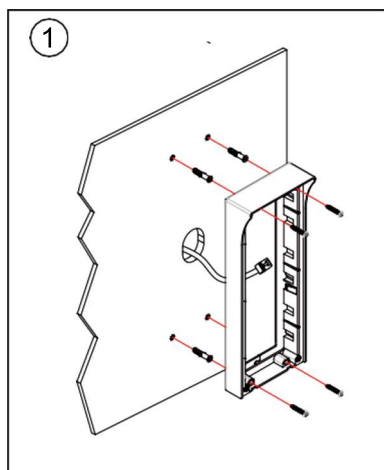
8 SD card connector

9 Lan connector
Use to connect the Entrance Panel to the network.

10 Terminal connector
Use to connect external devices.

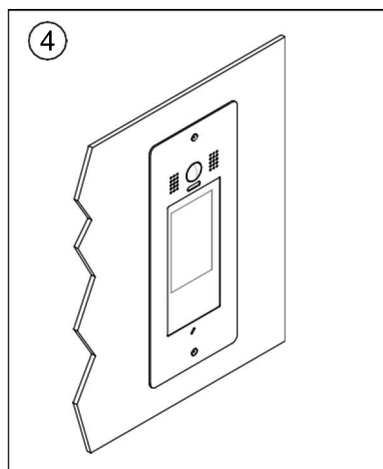
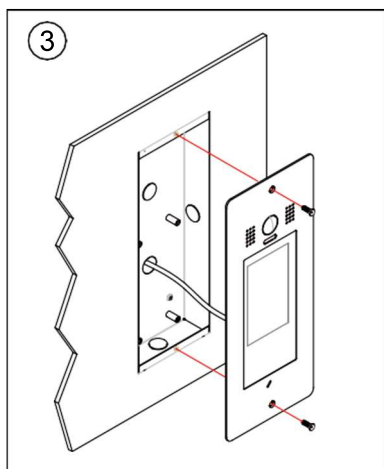
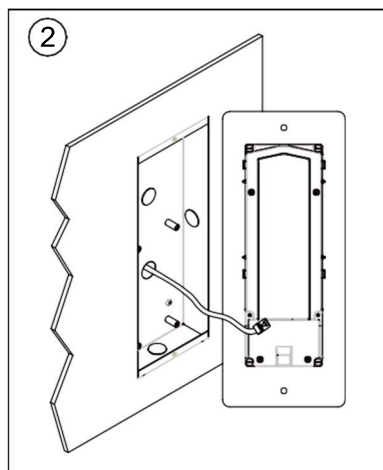
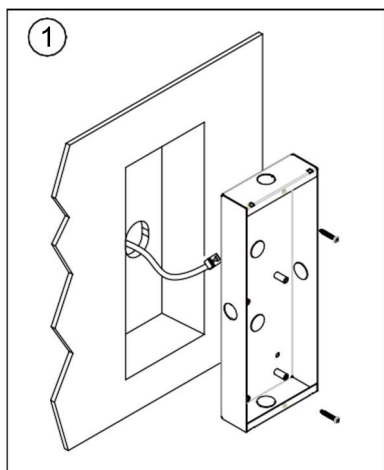
Entrance Panel Mounting

Surface mounting



1. Installation height for the Entrance Panel is usually 145~160cm.
2. Use screws to fix the back panel to the wall after connecting the cables
3. Use appropriate sealant at the top and sides of the back panel to inhibit water ingress, leaving the bottom clear for drainage.
4. Attach the front panel to the back panel.

Flush mounting

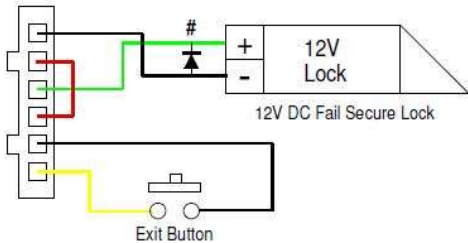
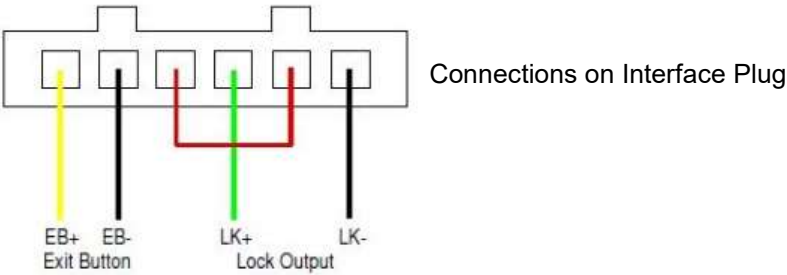


1. Installation height for the Entrance Panel is usually 145~160cm.
2. Use screws to fix the back panel to the wall after connecting the cables
3. Use appropriate sealant at the top and sides of the back panel to inhibit water ingress, leaving the bottom clear for drainage.
4. Attach the front panel to the back panel.

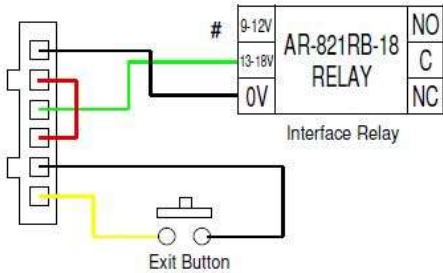
Electric Lock Connection

Door Lock Output from Entrance Panel

The Entrance Panel provides a 12V DC output when the lock1 release command is received. 12V DC locks of less than 300mA can be powered directly from the lock output. All other locks and higher loads will need to be configured via an interface relay (AR-821RB-18 or similar) with a separate dedicated power supply. Options are shown below.



12V DC Fail Secure Lock <300mA
Suppression diode must be fitted

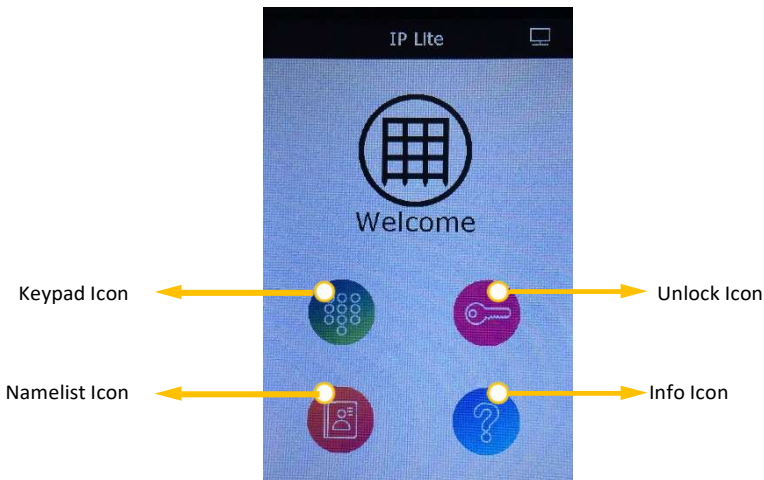


Interface Relay connections.
AR-821RB-18 has suppression fitted,
other relays may require a suppression
diode #


Typically used for maglocks

Entrance Panel Operations


Main menu



Calling a resident via a Dwelling number:

- 1 Tap 'Keypad' to enter the keypad page.
- 2 Enter the dwelling number.
- 3 Tap  to call.

Calling a resident via the Namelist:

- 1 Tap 'Namelist' to enter the Namelist page
- 2 Tap the desired name on the list
- 3 Tap  to call

Info

Tapping 'Info' provides general system information.

Opening the door by entering an unlock password:

1 Tap 'Unlock' to enter the keypad page.

2 Enter the common unlock code if one has been allocated.

OR

2 Enter your dwelling reference plus your personal unlock password if one has been allocated and tap 

i.e. dwelling **22** personal unlock code **5678** enter **225678** 

3 If the code is valid the door will release accompanied by an audio announcement stating "The door is open"

Open the door by using an access card/token:

Present your access card/token to the reader area of the Entrance Panel.

If your access card is valid at the Entrance Panel the panel will emit a short 'Beep' the lock will be released and an audio announcement will be made stating "The door is open"

If your access card/token is not valid at the Entrance Panel the panel will emit three rapid beeps, the lock will NOT be released.

Installer Mode

Calling Monitors in Installer Mode

When calling from the Namelist button in Installer mode additional information is provided, tap the monitor description to select it. The following additional information will be displayed:

Name, IP address and Time on line

Tap **Start calling** to initiate the call.

Sections or settings marked with these symbols should not be changed, the setting details are provided for information only and should not be changed without prior reference to Raytel Security Systems Technical support

Installer Mode gives access to all menus and settings, the menus in Installer mode are listed below:

Exit Installer Mode


Search Online

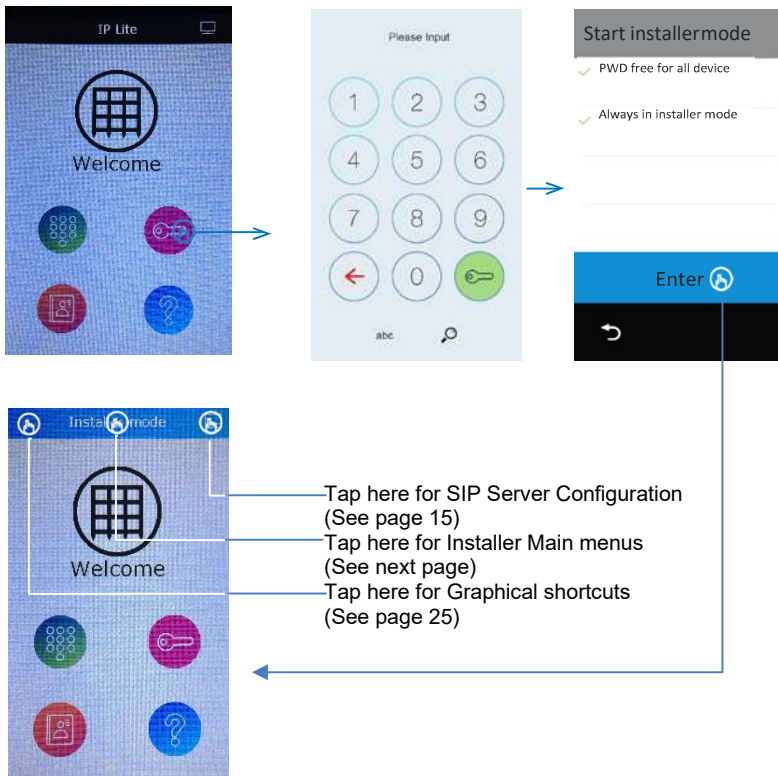
Settings

Call Record

Advanced Tools

To Enter Installer mode:

- 1 Tap 'Unlock' - Input "9901xxxxxxx" then confirm by tapping  (9901 + installer password, which is xxxxxxxx by default)
- 2 'PWD free for all device' and 'Always in installer mode' are selected by default. Tap 'Enter' if required
- 3 The Entrance Panel will show **Installer Mode** at the top of the display



Please note: The Default Installer password can be obtained from Raytel Security Systems.

By tapping the **Installer mode** blue bar in the centre (see previous page) the previously identified Installer **Main Menus** will become available:

Please note: Menus and sub menus are colour coded within this document as follows:


Main Menu Items are colour coded Blue

Sub Menu Items are colour coded Green

2nd level sub Menu items are colour coded Orange

3rd level sub Menu items are colour coded Grey

4th level Sub Menu items are colour coded Dark Red

When sub menus are in use the header may have a home symbol  tapping this symbol will return to the **Installer mode** screen.

Exit Installer Mode

To exit Installer mode on the Entrance Panel, tap 'Exit Installer Mode'

Note that if 'Always in installer mode' is selected when Installer mode is accessed then 'Exit installer mode' must be tapped to exit installer mode

Search Online

To search for other devices on the network tap **Search online** this will open the **Search online** screen with the following sub menus:

Bd_Nbr – Tap this line to set the Building number in complex systems. In simple systems leave this at the default setting of **0099**

Device – Tap this line to select the type of device to search for. The default is **ALL** devices.

Options are:

ALL – All devices

IM – Monitors

OS – Entrance Panels

DS – single button 'Local' Entrance Panels

GL – Guard or Concierge monitor/handset

Capacity – Tap this line to select the maximum number of devices that can be reported.

SEARCH – Tap this to perform a search based on the above selections and will return a list of devices that the Entrance Panel has been able to identify.

##Do not change any of the device settings reported in the **Device ID** menus unless Raytel Security Systems Technical Support have confirmed this action ##

By tapping a device in the above list the header will change to the **Device ID** menu further tests and information can be accessed as follows:

Device info: Provides a list of all of the device parameters

ProgCall_Nbr: Provides a list of the devices programmed configuration

Parameter: Provides access to a further set of menus as follows:

Network Setting: Shows all of the network settings for the device.

Call Setting: Shows all of the call settings for the device.

Lock and Pwd: Shows all the lock and password settings for the device.

Hardware Setting: Shows volume settings for the device.

Others: Shows additional information for the device.

Upgrade: Generally not used

Reboot: Generally not used

PING: Provides access to a further set of menus as follows:

PING_IP: IP address of the device for test

PING_TIMEOUT: Timeout setting

PING_COUNT: Number of test cycles

PING_SIZE: Size of test data

PING: Tap to carry out test

Settings

Tap **Settings** to access the **setting** screen with the following sub menus:


IP Address – Tap **IP Address** to access the **IP address** screen.
The IP address in **RED** below **IP address** is the current setting.

IP assigned accesses the **IP assigned screen**. Select either STATIC or DHCP&AUTO. The current selection will have a ✓ to its left hand side
Do not change this setting unless Raytel Security Systems Technical support have confirmed this action.

If STATIC has been selected it will now be possible to change the following settings:

IP address sets the IP address for the Entrance Panel, the current setting is shown in **RED**

IP subnet mask sets the IP subnet mask for the Entrance Panel, the current setting is shown in **RED**

IP Gateway sets the IP Gateway for the Entrance Panel, the current setting is shown in **RED**
Select  to return to the previous menu.

Call_Nbr – Tap to access the following sub menus:

BD_Nbr This is the Building Number where the Entrance Panel is located. Simple systems will not require a Building Number. The current setting is shown on the display in **RED** Tap to change the setting.

DS_Nbr - This is the Entrance Panel number and should be set to 1 for a single panel, additional panels should be numbered sequentially. The current setting is shown on the display in **RED** Tap to change the setting.

Name This enables a name to be allocated to the Entrance Panel. The current setting is shown on the display in **RED** Tap to change the setting.

Global_Nbr This is reserved for Guard station settings The current setting is shown on the display in **RED** Tap to change the setting.

Local_Nbr This is reserved for Guard station settings. The current setting is shown on the display in **Red** Tap to change the setting.

Virtual User – Tap to add a virtual user (Refer to Raytel Security Systems Technical support for further information)

DT IM – This is reserved. Do not change this setting unless Raytel Security Systems Technical support have confirmed this action.

Parameter – Tap to access the **Parameter** sub menu screen

Do not change any of the **Network settings** unless Raytel Security Systems Technical support have confirmed this action

Network setting Tap to access the **Network setting** screen, within this screen the following sub menus are shown. In each case the current setting is shown in **Red**

Static IP Address Shows the current IP address of the Entrance Panel

MAC Address Shows the MAC address of the Entrance Panel

Static IP Subnet Shows the current IP Subnet address for the Entrance Panel

Static IP Gateway Shows the current IP Gateway for the Entrance Panel

IP Policy Shows the current IP Policy for the Entrance Panel (this will usually be DHCP&AUTO)

AutoIP Subnet address Shows the automatically assigned IP Subnet address for the Entrance Panel.

AutoIP Gateway Shows the automatically assigned IP Gateway address for the Entrance Panel

AutoIP Segment Shows the automatically assigned IP Segment address of the Entrance Panel

Call setting Tap to access the **Call setting** sub menu screen

The current settings will be shown on the **Call setting** sub menu screen in **RED**

Do not change any of the **Call settings** unless Raytel Security Systems Technical support have confirmed this action

Device_Addr Shows the Entrance Panel Global system address

Global_Nbr This is reserved for Guard station settings. The current setting is shown on the display in **Red** Tap to change the setting.

Local_Nbr This is reserved for Guard station settings. The current setting is shown on the display in **Red** Tap to change the setting.

Name This is the name allocated to the Entrance Panel that will be visible on monitors. The current setting is shown on the display in **Red** Tap to change the setting.

SIP server This is a reserved setting for call forwarding functions.

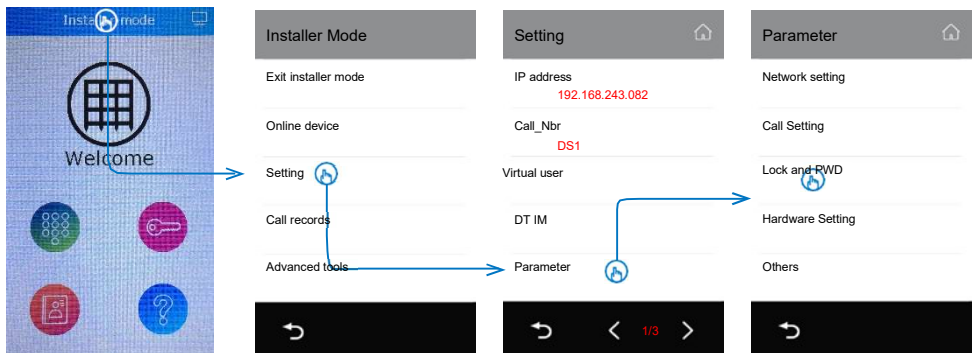
SIP Port This is a reserved setting for call forwarding functions.

SIP local account This is a reserved setting for call forwarding functions.

SIP local PWD This is a reserved setting for call forwarding functions.

SIP mon code This is a reserved setting for call forwarding functions.

Lock and Pwd, tap as shown below to access the **Lock and PWD** sub menu screen.



Installer PWD – Tap to change the Installer password

Common unlock code – Tap to enter or change the code. This is a common code for access via the keypad of the Entrance Panel (This is a 4 digit code, note that 0000 is a valid code, 1234 is the default)

Code unlock enable – Tap to enable or disable lock release via a common code **0 = Enabled, 1 = Disabled**

Remote unlock code read Tap to enable or disable reading the common code from monitors **0 = Enabled, 1 = Disabled**

Remote unlock code change Tap to enable or disable common code change from monitors **0 = Enabled, 1 = Disabled**

Code error protection Tap to enable or disable common code error protection **0 = Enabled, 1 = Disabled**

Lock1 mode - tap to change the output mode for Lock 1.

****Leave the mode as: Normally Open** (This is the default)

Lock1 unlock timing - tap to vary the lock1 activation time. Set the unlock time to the desired value (**5** seconds default)

Note: If the Entrance Panel is controlling the lock directly then the lock release time will be the “Lock1 unlocking time”.

If an interface relay is being used to trigger other equipment which is controlling the lock then the lock release time will be determined by the equipment controlling the lock, in this circumstance we would recommend that “Lock1 unlocking time” is set to **1** second

Lock2 mode - tap to change the output mode for Lock 2. Leave the mode as: **Normally Open** (This is the default)

Lock2 unlock timing - tap to vary the lock2 activation time. Set the unlock time to the desired value (**5** seconds default)

Lock 2 is the second lock output on the IP Lite PD Entrance Panel, it is a set of normally open (by default) contacts on connector CN-LK2

Hardware setting Tap to access the **Hardware setting** sub menu screen

Mic Volume Tap to vary the audio in volume. The default is **3** increase the value to increase the audio in volume.

SPK Volume Tap to increase the audio out volume. The default is **4** increase the value to increase the audio out volume.

Rain Cover Tap to select whether a Rain cover is fitted. The default setting is **Enable**. If no rain Cover is fitted select Disable by tapping **Rain Cover** (the current selection will have a ✓ to the left)

The current settings will be shown on the **Hardware setting** sub menu screen in **RED**

Do not change any of the **Hardware settings** unless Raytel Security Systems Technical support have confirmed this action.

Others Tap to access the **Others** sub menu screen.
The following information will be listed:

##The current settings if applicable will be shown on the **Others** sub menu screen in **RED** Do not change any of the **Others** settings unless Raytel Security Systems Technical support have confirmed this action ##

Upgrade server
Upgrade source
Upgrade code
Voice prompt language
Voice prompt volume
List display name only
List display smart address
List Call_Nbr if available
Screen mode
Auto call key in timing
Auto call minimum digit
Auto call maximum digit
PTT&JPG on in divert
Video proxy
Screen bright

Upgrade Tap to access the **Upgrade** menu screen

Server This is the IP address for an online update server

Download code This is a unique code for online updating

Check This is a check sum for confirming online update information.

The current settings will be shown on the **Upgrade** menu screen in **RED**. Do not change any of the **Upgrade** settings unless Raytel Security Systems Technical support have confirmed this action.

Date and Time Tap to access Date and Time settings

This opens the **Clock setting** screen with sub menus as follows:
Each of the sub menus shows the currently selected options in **RED**

To change these settings tap the menu item you wish to change. Within the sub screen there will be a ✓ to the left of the current selection.

Date Mode – Tap to change Year, month and day configuration, tap the required option, the display will return to the **Date and Time** menu.

Time Mode – Tap to change the time display configuration, tap the required option. The display will return to the **Date and Time** menu.

Date – Tap to set the date manually, once the date has been entered tap 'OK' The display will return to the **Date and Time** menu.

Time – Tap to set the time manually, once the time has been entered tap 'OK' The display will return to the **Date and Time** menu.

Internet time – This menu defines the parameters for automatic time updates when the Door Entry network has internet access. Internet time settings should not be changed unless Raytel Security Systems Technical Support have confirmed the revised settings.

Language – This is pre-set to English and should not be changed.

SIP Config – These parameters are pre-set and should not be changed.

About – The About menu provides all of the systems data relating to the Entrance Panel this is for technical support information only and no parameters can be changed.

Unlock code settings – tap to access the **Unlock code setting** screen. This will give access to the following sub menus:

Options – This menu controls the Common or Public Unlock Code function, it also controls access to the code from monitors in dwellings. Tap the option to be changed:

Disable code unlock

Common Unlock Code disabled when set **ON**

Enable User query

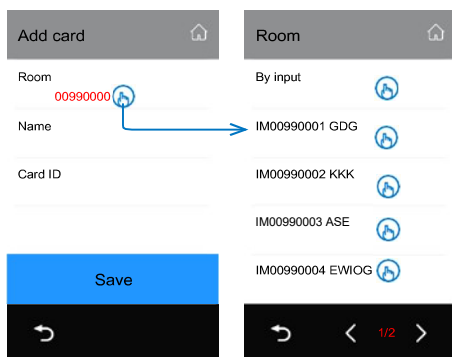
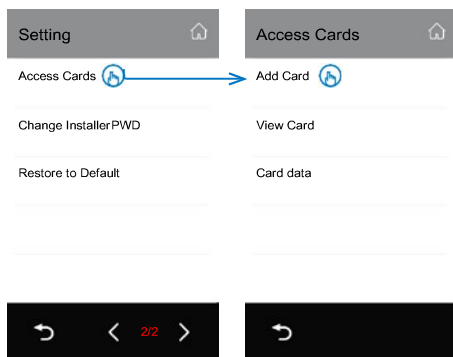
Allows users to check the common or public unlock code on their monitor when set **ON**.

The above options will have a Green tick ✓ if they are enabled, both options toggle i.e. each time the option is tapped the setting changes.

Change Public Unlock Code – This menu enables the Common or Public unlock code to be changed. Tap this item to change the code. Input the current code (1234 by default) and then Input the new code twice as prompted by the display. Once this is completed the display will return to the 'Unlock code setting' menu.

Access Cards – Tap to manage cards/tokens and related data. This will open the **Access Cards** menu

Add Card - To add a card tap “Add card”.



For ease of management operations on cards/tokens Any card/token that is added is associated to at least 1 monitor. The preference is to add cards/tokens to the monitor they will be issued to.

Tap ‘Room’ and Tap an online monitor from the list presented or tap **By input** and enter the “Room_Addr” that the card will register to (the Room_Addr will be the default building address followed by the room or dwelling reference i.e.

00990001 where **0099** = default building, **0001** = Room/dwelling 1)

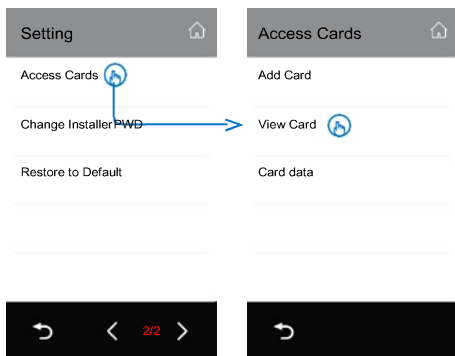
Tap **Name** and Input the card holder’s name or other reference.

Tap **Card ID** and manually input the card ID (ABA Format) or present the card/token.

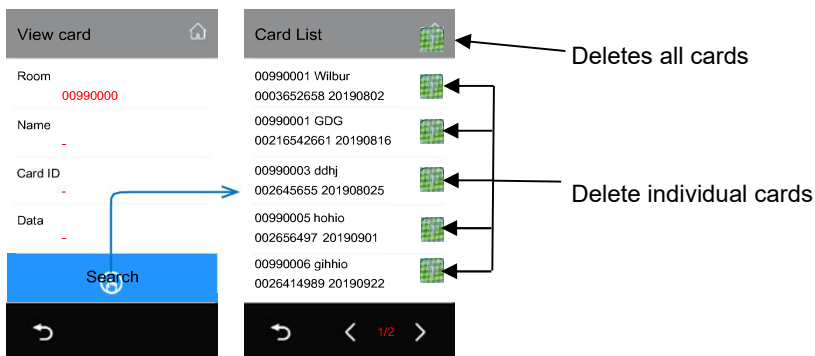
****Please see Page 26 for further information on card formats****

Tap **Save** to save the Card details.

View Card – tap to view the details of saved cards/tokens on this Entrance Panel



The **View Card** screen will open as shown below:



Tap **Search** to show all cards/tokens, otherwise refine the search with the following options:

Room

Input room number to search for cards/tokens associated to the building/room number

Name

Input card holder's name to search for cards/tokens with this name


Card ID

Input full 10 digits Card ID (ABA Format) (See page 26)

Date

Input a date to search by the date the card/token was entered on the panel.

Date format is YYYYMMDD

Press  to return to the search screen after each search condition is set.


Tap **Search** to display cards/tokens that meet the search criteria set above.

This will then generate a **Card List** screen.

Or

Present a card/token to check its details.

If you wish to **delete** an individual card:

In the **Card List** display tap  to the right of the Card Details.

Or

If you wish to **delete all cards** tap  on the title bar to delete all cards in the list.

Card data is displayed in the displayed **Card List** in the following format:

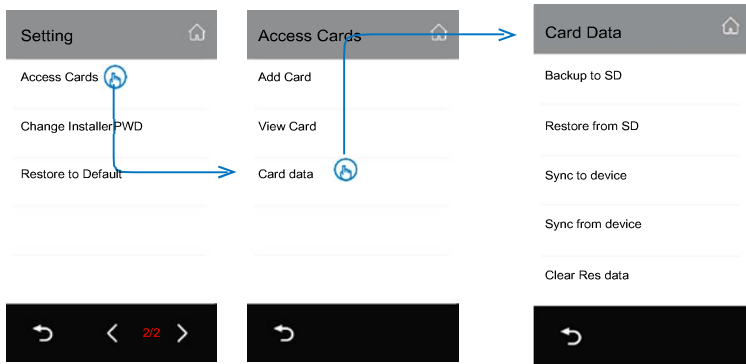
00990001= (Room_Address) Wilbur = (Name associated to card)

0003652658 = (Card ID, ABA Format) = 20190802(Card entry date)

Room_Address = 00990001 (0099 = building, 0001 = Room/dwelling)

Card entry date = YYYYMMDD (Year, Month, Day)

Card Data - tap to synchronise, backup and restore card/token data.



This gives access to the **Card Data** menu

Tap **Backup to SD**

To backup all card/token data to an SD card. When tapped a **?** symbol will appear to the right of **Backup to SD** tap again to confirm.

(This creates a folder titled R8009, within the Folder are .csv data files)

Tap **Restore from SD**

To restore card/token data from an SD card. When tapped a **?** symbol will appear to the right of **Restore from SD** tap again to confirm.

Tap **Sync to device**

To sync all card/token data to other online Entrance Panels (A list of devices is presented) Once device(s) are selected tap **Start sync**

Tap **Sync fromdevice**

To sync card/token data from other online Entrance Panels (A list of devices is presented) Once a device is selected tap **Start sync**

Tap **Clear Res data**

To clear this door Entrance Panels card/token data.

Change Installer PWD – Tap to Change the Installer Password, you will be required to enter the current password and then the new password twice. The Entrance Panel keypad display will prompt for the relevant passwords. Once completed the display will return to the **Setting** sub menu.

WARNING: There is no master reset for this Entrance Panel, if the Installer Password is changed and becomes unknown the panel will have to be returned to Raytel Security Systems.

Restore and backup – Tap to access the **Backup and restore** menu screen.

Please note that all of these functions will require an SD card to be present in the Entrance Panel.

Backup Tapping this option accesses the **Backup** menu screen.

New backup Tap to create a current backup of the Entrance Panel.

An hourglass symbol ⌚ will appear on the header bar. Once completed a folder called “Backup” will be created on the SD card. The folder will contain zipped files of the current data. The backup data will also appear in the list on the **Card data** screen

Existing backups Existing backups will be listed if they are on the SD card. Tap an existing backup if you wish to delete it, a **?** symbol will appear to the right of the backup information, tap the backup again to complete the deletion.

Restore from Backup Tapping this option will provide a list of backups stored on the SD Card. Tap the backup you wish to use for the Restore. A **?** symbol will appear to the right of the backup information, tap the backup again to Restore.

Restore factory settings Tap to restore all settings to factory default.

****Note:** all programmed settings will be erased**

Voice language – Do not change this setting.

Call record Mode – Tap to generate a list of calls from the Entrance Panel, identifying the device called with a time and date.

Advanced tools Mode - Tap to give access to the **Advanced tools** menu screen with the following sub menus:

Auto test tools – Tap to access the **Auto test tools** sub menu screen with the following sub menus:

Call testing – Tap to access the **Call testing** sub menu screen with the following sub menus:

Source – Tap to set the source device for the test call 'Self' is the Entrance Panel where the tests are being setup, if other Entrance Panels are configured and connected and are able to be used for this test they will show in the **Source** list.

Target – Tap to set the target device for the test. All online devices will show in the **Target** screen and the currently selected device will have a ✓ to the left of it. Any one of the devices in the list can be selected.

Test count – Tap to set the number of tests.

Test interval – Tap to set the test interval in minutes.

Start call testing – Tap to start call testing (this will initiate the call test as follows: Monitor will be called, Monitor will answer the call, Monitor will release the lock, monitor will end the call)


Auto test statistics – Tapping this menu will open an **Auto test statistics** screen showing:

IP Calls [x/y]
Call Service[0.0%]
SIP Calls [x/y]
SIP Service [0.0%,0.0%]
SIP Video [x/y]

Clear auto test logs – Tapping this menu will clear the auto test logs, the first tap will generate a ? to the right of the menu. Tapping a second time will clear the auto test log.



View auto test logs – tapping this menu will produce a scrollable report of tests.


Copy logs to SD – This enables call test logs to be stored on an inserted SD card

Create Device Summary(SD) – Tapping this option saves a Device summary to an installed SD card. A  will appear on the screen until the backup is finished. A .csv file will be created on the SD card prefixed with R8011.

Create device checklist(SD) – Tapping this option saves a Device checklist to an installed SD card.

RES Manager – Tap to access the **RES manager** menu screen

Back up to SD – Tapping this option will backup the RES files to an inserted SD card. Whilst the backup is in progress a  symbol will show in the **RES manager** header, a  will appear when the backup is complete. This creates a folder titled 'RES' on the SD card, the folder contains zipped data files.

Restore from SD – Tapping this option will provide a list of backups stored on the SD Card. Tap the backup you wish to use for the Restore. A  symbol will appear to the right of the backup information, tap the backup again to Restore the selected backup.

Sync to device – Tap to sync all RES data to other online Entrance Panels (A list of devices is presented) Once device(s) are selected tap **Start sync**

Sync from device – Tap to sync all RES data from another online Entrance Panels (A list of devices is presented) Once a device is selected tap **Start sync**

RES info – Tap to access the **Res info** screen with the following option.

Clear Customer resources – Tap  to clear customer RES data.

Batch update FW – This should not be selected unless Raytel Security Systems Technical Support have confirmed the settings.

Batch update Call_NBR - This should not be selected unless Raytel Security Systems Technical Support have confirmed the settings.

Batch device reboot – This should not be selected unless Raytel Security Systems Technical Support have confirmed the settings.

Batch change Installer PWD – This should not be selected unless Raytel Security Systems Technical Support have confirmed the settings.

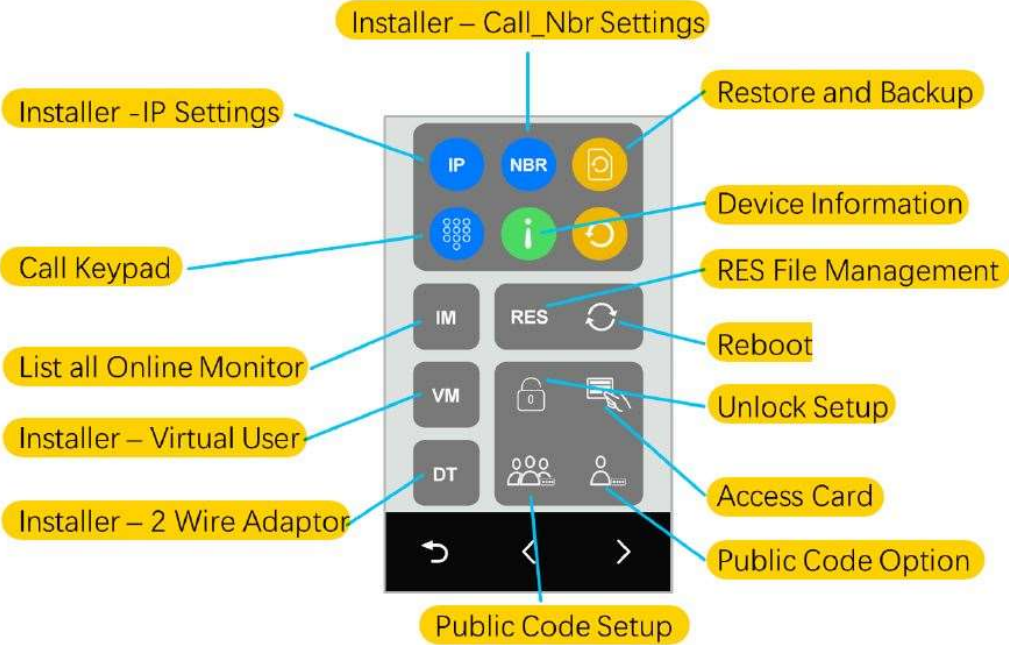
Batch update parameter – This should not be selected unless Raytel Security Systems Technical Support have confirmed the settings.

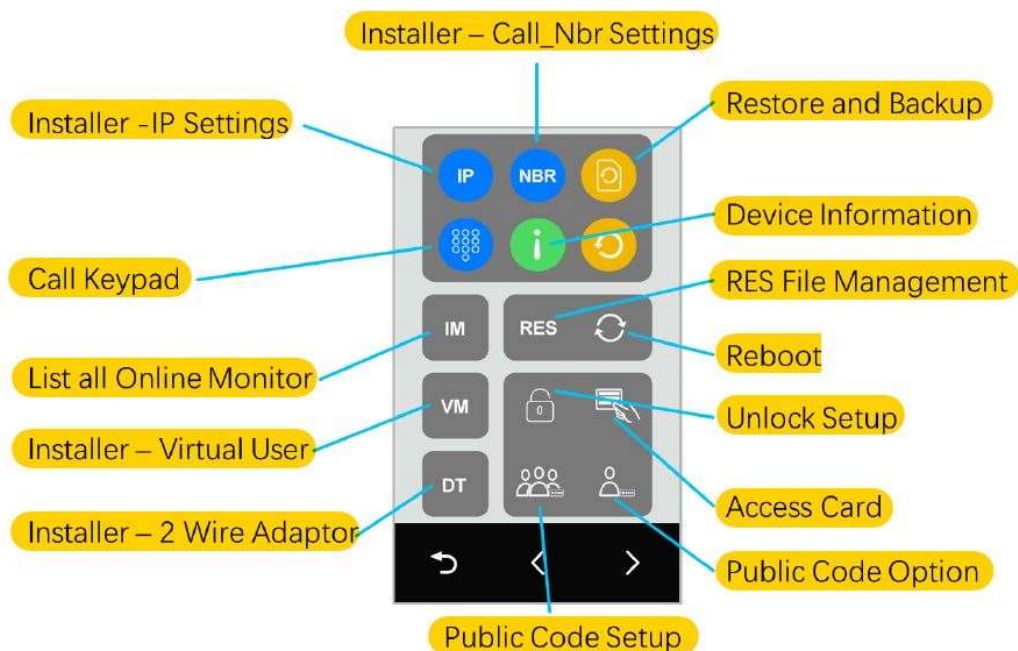
Installer Mode shortcuts

When installer mode has been configured tap the title bar in the areas shown to access the functions identified.



- Tap here for SIP Server Configuration
(Shortcut to: [Settings/SIP Config](#) see Page 15)
- Tap here for Installer Main menus
- Tap here for Graphical shortcuts
(Shown below)





Installer – IP Settings is a shortcut to: [Settings/IP Address](#) (Page 10)

Installer – Call_Nbr Settings is a shortcut to: [Settings/Call_Nbr](#) (Page 11)

Restore and Backup is a shortcut to: [Settings/Restore and backup/ Backup](#) (Page 22)

Device Information is a shortcut to: [Search Online/About](#) (Page 9)

RES File Management is a shortcut to: [Advanced tools/RES Manager](#) (Page 24)

Reboot is a shortcut to: [Settings/Restore and backup/Restore from Backup](#) (Page 22)

Unlock Setup is a shortcut to: [Settings/Unlock code settings](#) (Page 17)

Access Card is a shortcut to: [Settings/ Access Cards](#) (Page 18)

Public Code Option is a shortcut to: [Settings/Unlock code settings /Options](#) (Page 17)

Public Code Setup is a shortcut to: [Settings/Unlock code settings](#) (Page 17)

Installer – 2 Wire Adaptor is not used in this application.

Installer – Virtual User is a shortcut to: [Settings/Virtual User](#) (Page 11)

List all Online Monitor is a shortcut to: [Search Online](#) (Page 9)

Call Keypad is a shortcut to: The Call Keypad (Page 5)

Additional information on the storage of card/token data

Card data is stored in ABA format, the card/token data is read as WG26.

Manufacturers tokens supplied for this system will have the ABA code on the token (10 digits)

Other cards and tokens may have a Site Code and a Card Code rather than an ABA format. This is usually on the card or token as sssss:cccc where sssss is the site code and ccccc is the card code.

e.g. 02144:22875 – Site Code = 02144, Card Code = 22875

If you wish to check that the stored data is correct the site code and card code can be converted to ABA format as follows:

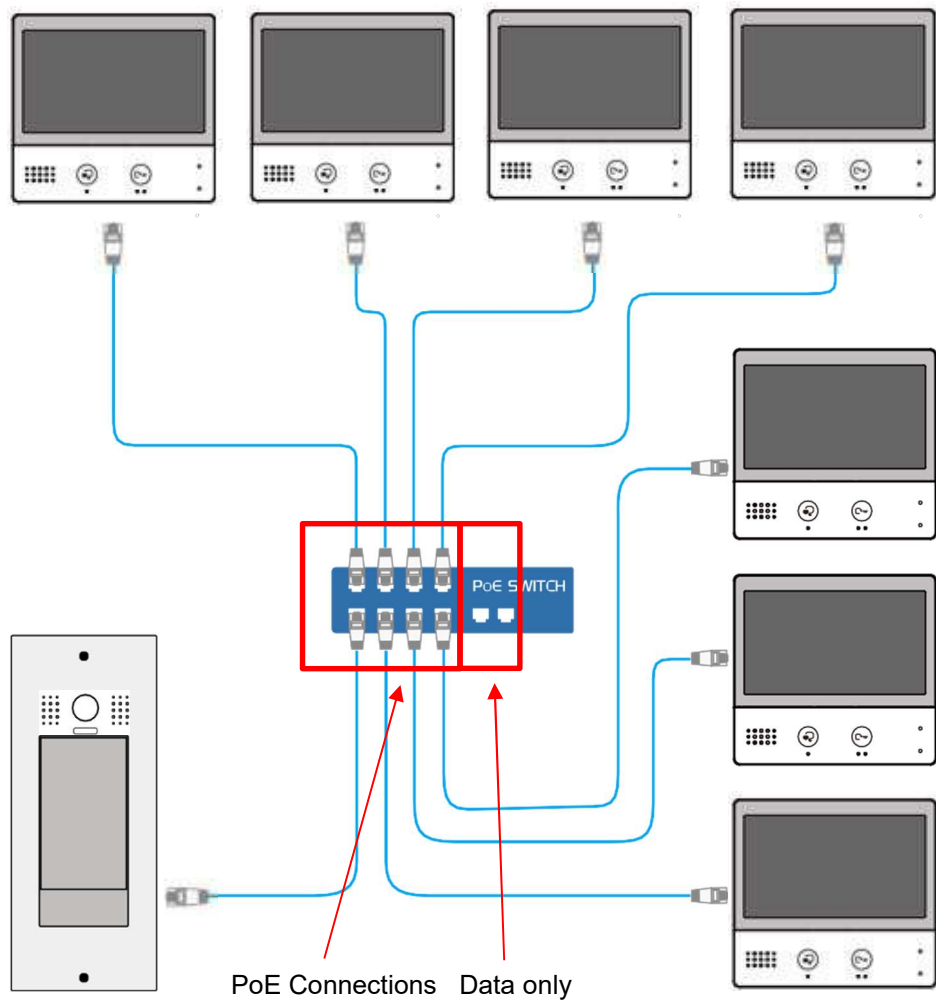
1. Multiply the Site Code by 65536
2. Add the Card Code to the result

For example: $02144 \text{ (Site Code)} \times 65536 = 140509184 + 22875 \text{ (Card Code)} = 140532059 \text{ (ABA Format)}$

5. Specification

- Power Source: Power-over-Ethernet (IEEE 802.3af Class 0)
- LAN Interface: 10 BASE-T / 100 BASE-TX Ethernet (RJ-45)
- Camera: Type 1/3.7" Ultra Sense, ISP with 77dB WDR
- Lens angle: 170 degree with Fisheye correction
- Screen: 5 Inch digital colour TFT
- Display Resolutions: 800*480 resolution
- Minimum illumination: 5 lux
- Card Reader: RFID 125Khz and 13.56Mhz (Dual band)
- Wire Type: Cat-5e or Cat-6 standard Ethernet cable
- Wiring Distance: 100m (Approx. 330')
- Operating temperature: -10 to +50 (oC)
- Protection: IP65;
- Dimension: 281(H) × 110(W) × 44(D)mm (Surface)
316(H) × 133(W) × 46(D)mm (Flush)

6. Wiring



The design and specifications of this product can be modified without notice to the user.
The rights to this manual are reserved.